

4

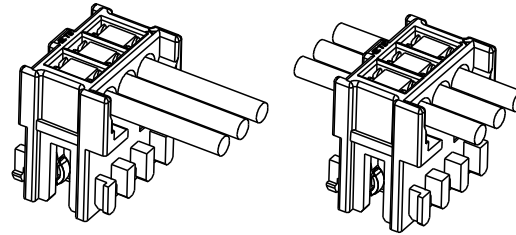
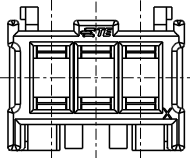
3

2

1

THIS DRAWING IS UNPUBLISHED. RELEASED FOR PUBLICATION  
© COPYRIGHT copyright.d8te ALL RIGHTS RESERVED.

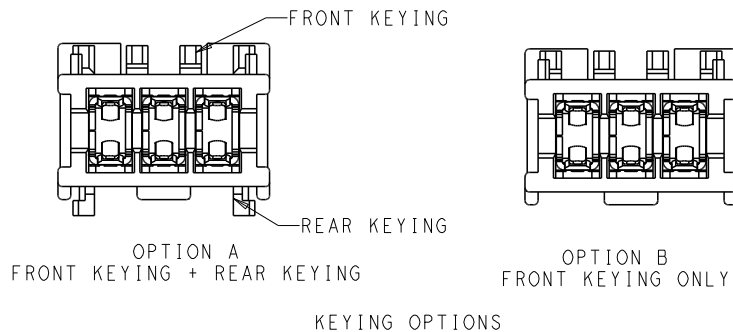
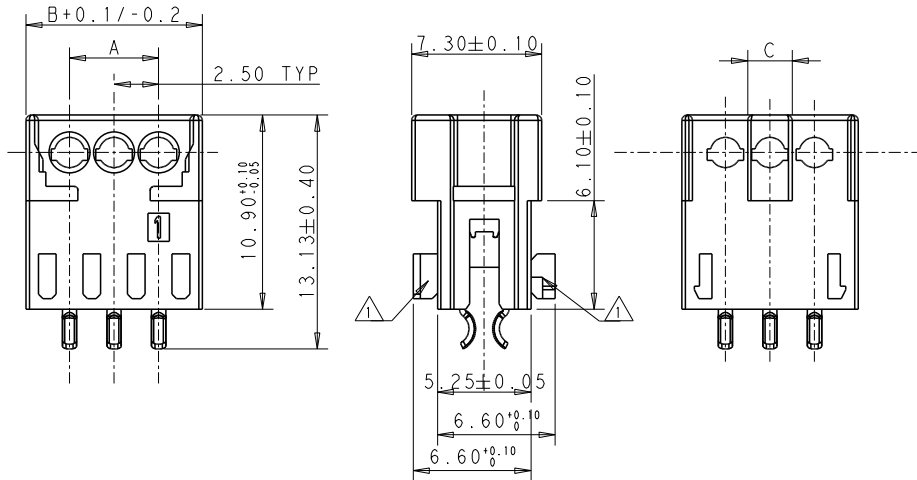
REVISIONS				
P	LYR	DESCRIPTION	DATE	DWN APVD
A3		ECR-16-010718	26JUL2016	WW RR
A4		ECR-16-015495	03NOV2016	WW RR
A5		ECR-17-011058	31JUL2017	WW RR



TERMINATED STATUS

NOTES:

- 1 KEYING RIBS: POSSIBLE TO BE CUT WITH TERMINATION MACHINE
- 2. MATING PART: PCB OR TAB HEADER ACC. RAST 2.5 STANDARD
- 3. HOUSING: PA 66 GF, IEC 60335-1 GLOW WIRE TEST 750°C WITHOUT FLAME CONTACT: COPPER ALLOY WITH TIN PLATED
- 4. WIRE RANGE 0.22~0.35MM<sup>2</sup>, INSULATION RANGE 1.2~1.6 MM
- 5 KEYING RIBS BETWEEN CAVITY NO.. SEE TABLE
- 6 TWO KEYING OPTIONS ARE AVAILABLE, THE DIMENSIONS FOR THE TWO OPTIONS ARE THE SAME EXCEPT THAT THE OPTION B ONLY HAS THE FRONT KEYING
- 7. FULLY LOADED AND SELECTIVELY LOADED VERSIONS ARE AVAILABLE
- 8 X.. CAVITY LOADED WITH CONTACT  
O.. CAVITY WITHOUT CONTACT
- 9 KEYING CONFIGURATION SEE PAGE 5, IF NO DETAIL KEYING CONFIGURATION SHOWED TO A PN, THEN NO NEED TO CUT ANY KEYING ON THIS PN
- 10. THE SCRATCHES ON THE HOUSING DUE TO THE BARBS OF THE CONTACT ARE ACCEPTABLE, DETAIL PICTURES PLEASE SEE THE SEPC 114-106198.
- 11 PRELIMINARY PART NOT RELEASED FOR PRODUCTION
- 12 THE PART NUMBER IS WITH LOOSE PIECE AND PACKAGED WITH TUBE
- 13 THE PART NUMBER IS WITH CHAIN CONNECTION AND PACKAGED WITH CARTON BOX



THIS DRAWING IS A CONTROLLED DOCUMENT.		DWN Winter Wong 09JUN2015	TE Connectivity	
DIMENSIONS: (mm)		CHK Daniel Zhang 09JUN2015	NAME Customer Drawing MONOPLUS 2.5 CONNECTOR	
TOLERANCES UNLESS OTHERWISE SPECIFIED:		APVD Riccardo Rabone 09JUN2015	SIZE A2	CAGE CODE -
0 PLC ±0.4		PRODUCT SPEC 108-106198	DRAWING NO C=2232884	RESTRICTED TO -
1 PLC ±0.3		APPLICATION SPEC 114-106198	SCALE 5:1	SHEET 1 of 5
2 PLC ±0.2		WEIGHT -	REV A5	
3 PLC ±		CUSTOMER DRAWING		
4 PLC ±				
ANGLES FINISH				

4

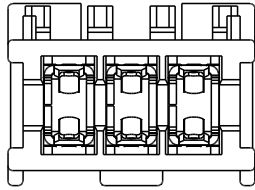
3

2

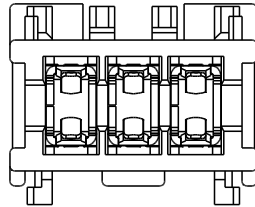
1

THIS DRAWING IS UNPUBLISHED.      RELEASED FOR PUBLICATION  
 © COPYRIGHT copyright.d8te      ALL RIGHTS RESERVED.

REVISIONS				
P	LYR	DESCRIPTION	DATE	APVD



KEYING OPTION B



KEYING OPTION A

CAVITIES LOADED	KEYING OPTION	POS.	DIM A	DIM B	DIM C	PART-NO.
ALL CAVITIES LOADED WITH CONTACT, FULLY LOADED	B	13	30	34.9	2.5	1-2232893-3
		12	27.5	32.4	5	1-2232893-2
		11	25	29.9	2.5	1-2232893-1
		10	22.5	27.4	5	1-2232892-0
		9	20	24.9	2.5	1-2232892-9
		8	17.5	22.4	5	1-2232892-8
		7	15	19.9	2.5	1-2232892-7
		6	12.5	17.4	5	1-2232892-6
		5	10	14.9	2.5	1-2232892-5
		4	7.5	12.4	5	1-2232892-4
		3	5	9.9	2.5	1-2232892-3
		2	2.5	7.4	2.5	1-2232892-2
ALL CAVITIES LOADED WITH CONTACT, FULLY LOADED	A	13	30	34.9	2.5	1-2232885-3
		12	27.5	32.4	5	1-2232885-2
		11	25	29.9	2.5	1-2232885-1
		10	22.5	27.4	5	1-2232884-0
		9	20	24.9	2.5	1-2232884-9
		8	17.5	22.4	5	1-2232884-8
		7	15	19.9	2.5	1-2232884-7
		6	12.5	17.4	5	1-2232884-6
		5	10	14.9	2.5	1-2232884-5
		4	7.5	12.4	5	1-2232884-4
		3	5	9.9	2.5	1-2232884-3
		2	2.5	7.4	2.5	1-2232884-2

THIS DRAWING IS A CONTROLLED DOCUMENT.      DWN: 09JUN2015  
 WINTER WOOD      CHK: 09JUN2015  
 Daniel Zhang      APVD: 09JUN2015  
 Riccardo Robone      NAME: Customer Drawing

**TE**      TE Connectivity

PRODUCT SPEC: 108-106198      MONOPLUG 2.5 CONNECTOR

APPLICATION SPEC: 114-106198      SIZE: A2      CAGE CODE: -      DRAWING NO: C=2232884      RESTRICTED TO: -

MATERIAL: -      FINISH: -      WEIGHT: -      CUSTOMER DRAWING      SCALE: 5:1      SHEET: 2 OF 5      REV: A5

4

3

2

1

THIS DRAWING IS UNPUBLISHED.      RELEASED FOR PUBLICATION  
 © COPYRIGHT copyright.d8te      ALL RIGHTS RESERVED.

REVISIONS					
P	LYR	DESCRIPTION	DATE	DWN	APVD

1	2	3	4	5	6	7	8	9	10	11	12	13	KEYING OPTION		POS.	DIM A	DIM B	DIM C	PART-NO.
X	O	X	O	X	O	X	O	X	O	X	O	X	B	13	30	34.9	2.5	1-2232891-3	
X	X	X	O	O	X	O	O	X	X	X	X	12		27.5	32.4	5	1-2232891-2		
X	X	X	O	O	O	X	O	X	O	X	11	25		29.9	2.5	2-2232891-1			
X	O	X	O	X	O	X	O	X	O	X	11	25		29.9	2.5	1-2232891-1			
X	O	O	X	O	X	O	X	O	X	10	22.5	27.4		5	4-2232890-0				
X	X	O	X	O	X	O	X	O	X	10	22.5	27.4		5	3-2232890-0				
X	X	O	X	O	X	O	X	X	X	10	22.5	27.4		5	1-2232890-0				
X	O	X	O	X	O	X	O	X	9	20	24.9	2.5		1-2232890-9					
X	X	O	O	O	X	X	X	8	17.5	22.4	5	1-2232890-8							
X	O	X	O	X	O	X	7	15	19.9	2.5	1-2232890-7								
X	O	X	O	X	X	6	12.5	17.4	5	1-2232890-6									
X	O	X	O	X	5	10	14.9	2.5	1-2232890-5										
X	O	X	X	4	7.5	12.4	5	1-2232890-4											
X	O	X	3	5	9.9	2.5	1-2232890-3												
X	O	2	2.5	7.4	2.5	1-2232890-2													
X	O	X	O	X	O	X	O	X	O	X	A	13	30	34.9	2.5	1-2232895-3			
X	X	X	O	O	X	O	O	X	X	X		X	12	27.5	32.4	5	1-2232895-2		
X	X	X	O	O	O	X	O	X	O	X		11	25	29.9	2.5	2-2232895-1			
X	O	X	O	X	O	X	O	X	O	X		11	25	29.9	2.5	1-2232895-1			
X	X	O	X	O	X	O	X	X	X	10		22.5	27.4	5	1-2232894-0				
X	O	X	O	X	O	X	O	X	9	20		24.9	2.5	1-2232894-9					
X	X	O	O	O	X	X	X	8	17.5	22.4		5	1-2232894-8						
X	O	X	O	X	O	X	7	15	19.9	2.5		1-2232894-7							
X	O	X	O	X	X	6	12.5	17.4	5	1-2232894-6									
X	O	X	O	X	5	10	14.9	2.5	1-2232894-5										
X	O	X	X	4	7.5	12.4	5	1-2232894-4											
X	O	X	3	5	9.9	2.5	1-2232894-3												
X	O	2	2.5	7.4	2.5	1-2232894-2													

CAVITIES LOADED

THIS DRAWING IS A CONTROLLED DOCUMENT.		DWN Winter Wong 09 JUN 2015	TE Connectivity	
DIMENSIONS: (mm)		CHK Daniel Zhang 09 JUN 2015	NAME Customer Drawing MONOPLUG 2.5 CONNECTOR	
TOLERANCES UNLESS OTHERWISE SPECIFIED:		APVD Riccardo Robone 09 JUN 2015	PRODUCT SPEC 108-106198	
0 PLC ±0.4		APPLICATION SPEC 114-106198		
1 PLC ±0.3		RESTRICTED TO		
2 PLC ±0.2		SIZE A2		
3 PLC ±		CAGE CODE -		
4 PLC ±		DRAWING NO C=2232884		
ANGLES FINISH		WEIGHT -		
MATERIAL -		CUSTOMER DRAWING		
-		SCALE 5:1		
-		SHEET 3 of 5		
-		REV A5		

4

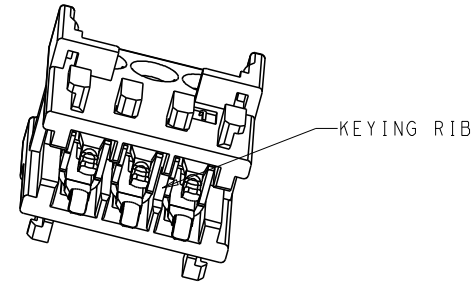
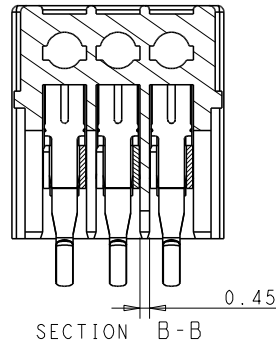
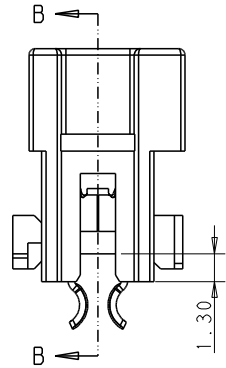
3

2

1

THIS DRAWING IS UNPUBLISHED. RELEASED FOR PUBLICATION  
© COPYRIGHT copyright.d8te ALL RIGHTS RESERVED.

REVISIONS				
P	LYR	DESCRIPTION	DATE	APPD



ALL CAVITIES LOADED WITH CONTACT, FULLY LOADED

X	O	X	O	X	O	X	O	X	O	X	O	X
X	X	X	O	O	X	O	O	X	X	X	X	
X	O	X	O	X	O	X	O	X	O	X		
X	X	O	X	O	X	O	X	X	X			
X	O	X	O	X	O	X	O	X				
X	X	O	O	O	X	X	X					
X	O	X	O	X	X							
X	O	X	O	X								
X	O	X	X									
X	O	X										
X	O											
1	2	3	4	5	6	7	8	9	10	11	12	13

CAVITIES LOADED

POS.	DIM A	DIM B	DIM C	KEYING RIB	PART-NO.	
13	30	34.9	2.5	TBD	2306443-3	
12	27.5	32.4	5	TBD	2306443-2	
11	25	29.9	2.5	TBD	2306443-1	
10	22.5	27.4	5	TBD	1-2304155-0	
9	20	24.9	2.5	TBD	2304155-9	
8	17.5	22.4	5	TBD	2304155-8	
7	15	19.9	2.5	TBD	2304155-7	
6	12.5	17.4	5	TBD	2304155-6	
5	10	14.9	2.5	TBD	2304155-5	
4	7.5	12.4	5	3/4	2-2304155-4	
4	7.5	12.4	5	1/2	2304155-4	
3	5	9.9	2.5	1/2	2304155-3	
2	2.5	7.4	2.5	TBD	2304415-2	
13	30	34.9	2.5	TBD	2306440-3	
12	27.5	32.4	5		2306440-2	
11	25	29.9	2.5		2306440-1	
10	22.5	27.4	5		1-2306439-0	
9	20	24.9	2.5		2306439-9	
8	17.5	22.4	5		2306439-8	
7	15	19.9	2.5		2306439-7	
6	12.5	17.4	5		2306439-6	
5	10	14.9	2.5		2306439-5	
4	7.5	12.4	5		1/2	2306439-4
3	5	9.9	2.5		1/2	2306439-3
2	2.5	7.4	2.5		TBD	2306439-2

THIS DRAWING IS A CONTROLLED DOCUMENT.

DWN: Winter Wong 09JUN2015  
 CHK: Daniel Zhang 09JUN2015  
 APPD: Riccardo Hobone 09JUN2015

TE Connectivity

Customer Drawing  
 MONOPLUS 2.5 CONNECTOR

SIZE: A2 CAGE CODE: - DRAWING NO: C=2232884 RESTRICTED TO: -  
 SCALE: 5:1 SHEET: 4 OF 5 REV: A5

DIMENSIONS: (mm) TOLERANCES UNLESS OTHERWISE SPECIFIED:  
 0 PLC ±0.4  
 1 PLC ±0.3  
 2 PLC ±0.2  
 3 PLC ±  
 4 PLC ±  
 ANGLES FINISH: \*

MATERIAL: - FINISH: - WEIGHT: - CUSTOMER DRAWING

4

3

2

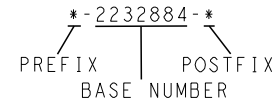
1

THIS DRAWING IS UNPUBLISHED.      RELEASED FOR PUBLICATION  
 © COPYRIGHT copyright.d8te      ALL RIGHTS RESERVED.

REVISIONS				
P	LYR	DESCRIPTION	DATE	APPD

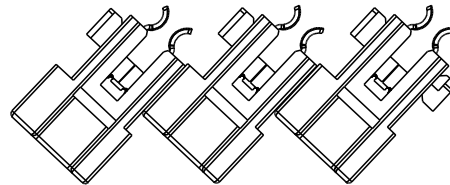
FOR ANY PART NUMBER WITH KEYING OPTION A, THERE ARE TWO PACKGING STYLE AVAILABLE, LOOSE PIECE AND CHAIN CONNECTION. THE P/N OF THE PARTS IN CHAIN CONNECTION IS BASED ON THE PARTS IN LOOSE PIECE, THE PREFIX AND POSTFIX ARE THE SAME FOR THE SAME STRUCTURE OF THE PARTS, BUT THE BASE NUMBERS ARE DIFFERENT ACCORDING TO DIFFERENT PACKAGING STYLE. THE FOLLOWING TABLE SHOWS THE P/S FOR THE PARTS IN CHAIN CONNECTION BASED ON THE PARTS IN LOOSE PIECE

PACKAGING STYLE	△ LOOSE PIECE △	△ CHAIN CONNECTION △
PART NUMBER OF MONOPLUG 2.5	*-2232884-*	*-2305996-*
	*-2232885-*	*-2305997-*
	*-2232894-*	*-2305998-*
	*-2232895-*	*-2305999-*
	*-2304155-*	*-2306437-*
	*-2306443-*	*-2306438-*
	*-2306439-*	*-2306441-*
	*-2306440-*	*-2306442-*



\* CAN BE THE NUMBER FROM 0 TO 9, AND 0 CAN BE DEFAULT

FOR EXAMPLE, IF A PART OF MONOPLUG 2.5 IS IN LOOSE PIECE, AND IT'S PART NUMBER IS 1-2232885-2, AND IF THE SAME PART IS IN CHAIN CONNECTION, THEN THE PART NUMBER IS 1-2305997-2



△ CHAIN CONNECTION

THIS DRAWING IS A CONTROLLED DOCUMENT.		DWN Winter Wang 09 JUN 2015	TE Connectivity											
DIMENSIONS: mm		CHK Daniel Zhang 09 JUN 2015	NAME Customer Drawing MONOPLUG 2.5 CONNECTOR											
TOLERANCES UNLESS OTHERWISE SPECIFIED:		APPD Riccardo Rabone 09 JUN 2015	PRODUCT SPEC 108-106198											
<table border="1"> <tr><td>0 PLC</td><td>±0.4</td></tr> <tr><td>1 PLC</td><td>±0.3</td></tr> <tr><td>2 PLC</td><td>±0.2</td></tr> <tr><td>3 PLC</td><td>±</td></tr> <tr><td>4 PLC</td><td>±</td></tr> </table>		0 PLC	±0.4	1 PLC	±0.3	2 PLC	±0.2	3 PLC	±	4 PLC	±	APPLICATION SPEC 114-106198	SIZE A2	CAGE CODE -
0 PLC	±0.4													
1 PLC	±0.3													
2 PLC	±0.2													
3 PLC	±													
4 PLC	±													
MATERIAL -		FINISH -	WEIGHT -	DRAWING NO ©=2232884										
-		CUSTOMER DRAWING		RESTRICTED TO -										
-		SCALE 5:1		SHEET 5 OF 5      REV A5										