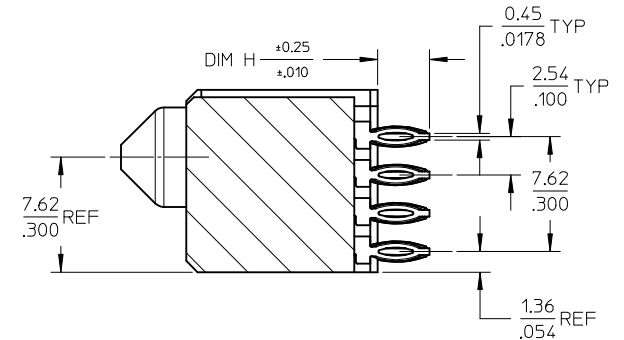
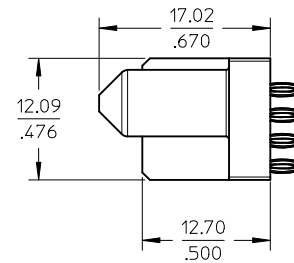
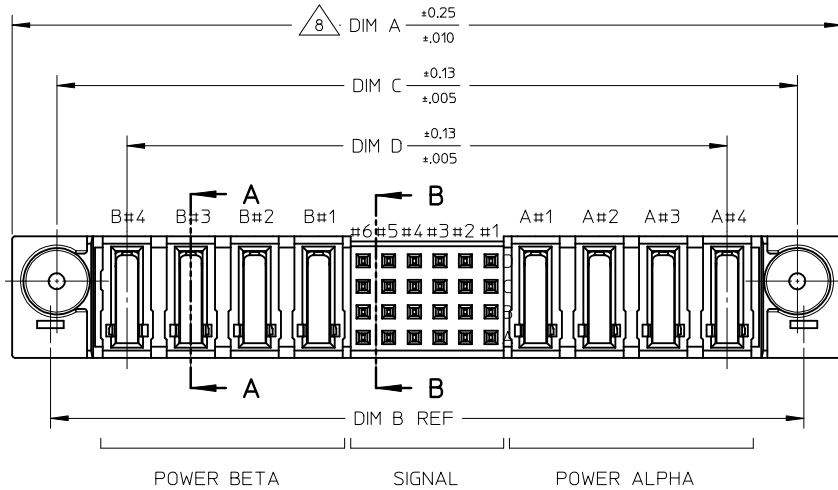


SECTION A-A

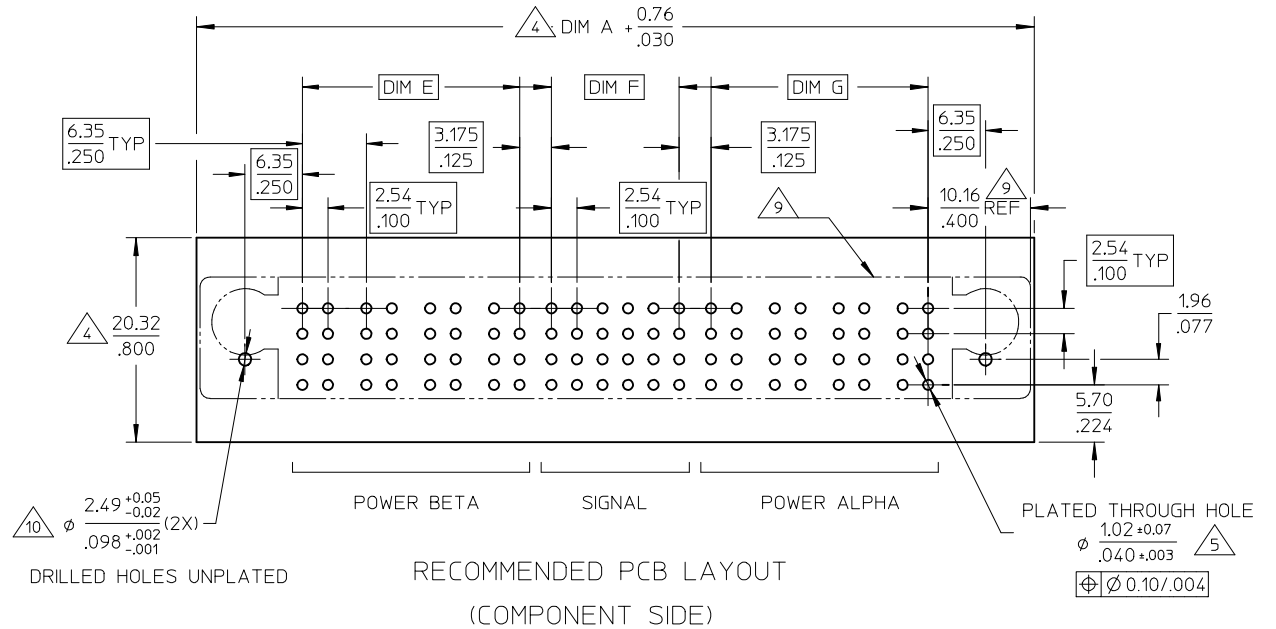


SECTION B-B

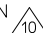
| | | | | | | | | | |
|---|-----------------|--|--------|--------------------------|---|--------------|---|------------------------|--|
| REVISED IEC NO: S2014-0060 DRWNS:KANG 2013/07/15 CH'KD:MLONG 2013/09/06 APPR:MLONG 2013/09/09 | QUALITY SYMBOLS | GENERAL TOLERANCES (UNLESS SPECIFIED) | | DIMENSION STYLE MM/IN | | SCALE NTS | DESIGN UNITS METRIC | THIRD ANGLE PROJECTION | |
| | $\nabla_F=0$ | 4 PLACES | ± --- | ± --- | DRAWN BY | DATE | TITLE | | |
| | $\nabla_E=0$ | 3 PLACES | ± --- | ± .010 | CHECKED BY | DATE | POWER CONN. RECEPTACLE P-S-P CONFIGURATION VERT. PRESS-FIT,W/G POST | | |
| | $\nabla_D=0$ | 2 PLACES | ± 0.25 | ± --- | PTLIM | 2002/11/21 | moLEX DOCUMENT NO. SD-87633-013 SHEET NO. 1 OF 3 | | |
| | 1 PLACE | ± --- | ± --- | APPROVED BY | DATE | | | | |
| | 0 PLACE | ± | ± | SKTOH | 2002/11/21 | | | | |
| | | ANGULAR ± 3 ° | | MATERIAL NO. | | | | | |
| | | DRAFT WHERE APPLICABLE MUST REMAIN WITHIN DIMENSIONS | | SEE TABLE | | | | | |
| | | | | SIZE A3 | THIS DRAWING CONTAINS INFORMATION THAT IS PROPRIETARY TO MOLEX INCORPORATED AND SHOULD NOT BE USED WITHOUT WRITTEN PERMISSION | | | | |

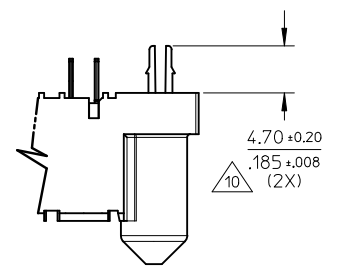
NOTES

- 1 MATERIALS :-
HOUSING - LCP, GLASS FILLED, UL94V-0,
COLOR: BLACK.
SIGNAL TERMINAL - COPPER ALLOY
POWER TERMINAL - COPPER ALLOY
- 2 FINISH :-
SIGNAL & POWER CONTACTS
0.76 MICROMETER MINIMUM GOLD (Au) AT CONTACT AREA
AND 2.54 MICROMETER MINIMUM TIN AT SOLDER TAIL
AREA OVER 1.27um MINIMUM NICKEL (Ni) UNDERPLATE.
- 3 SPECIFICATIONS :-
PRODUCT SPECIFICATION : PS-87633-006
APPLICATION SPECIFICATION : AS-87633-007
- 4 COMPONENT STAY AWAY ZONE FROM CONNECTOR.
- 5 PCB NOTE FOR DIAMETER 1.02/.040 PLATED HOLE.
- DRILLED HOLE SIZE IS 1.151/.0453
- PLATED WITH 0.007/.0003 MINIMUM TIN OVER
0.03/.001 TO 0.08/.003 COPPER PLATING TO ACHIEVE
1.02±0.08/.040±.003 HOLE.
- 6 ALL TERMINAL TIPS ARE DESIGNED WITH EXPOSED BASE COPPER.
THIS IS CREATED BY FINAL CUTTING PROCESS AFTER PLATING.
- 7 MANUFACTURER LOGO, PART NUMBER AND YEAR-WEEK CODE.
- 8 4Pa-24S-4Pb CONFIGURATION IS SHOWN FOR ILLUSTRATION ONLY.
P-S-P CONFIGURATION IS AVAILABLE UP TO 203MM/8INCH.
PLEASE CONTACT MOLEX SALES PERSONNEL FOR OTHER
CONFIGURATION AND OPTION NEEDED.
- 9 IMAGINARY LINE AND DIMENSION TO POSITION AND PROVIDE
CONNECTOR ORIENTATION WITH RESPECT TO PCB LAYOUT.
- 10 OPTIONAL BOARDLOCK FEATURE FOR SYMETRICAL POWER CONFIG
FULL PROOFING UPON CUSTOMER REQUEST.

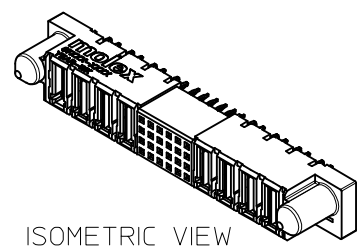


| | | | | | | | | | | | | |
|---|--------------------|--|---------------------------------------|---|---|------------|-------|--|------------------------|--|--|--|
| REVISED EC NO: S2014-0060 DRWN:SKANG 2013/07/15 CHKD:MLONG 2013/09/06 APPR:MLONG 2013/09/09 | DESCRIPTION REV | QUALITY SYMBOLS $F_A=0$ $F_G=0$ $F_P=0$ | GENERAL TOLERANCES (UNLESS SPECIFIED) | | DIMENSION STYLE | | SCALE | DESIGN UNITS | THIRD ANGLE PROJECTION | | | |
| | | | mm | INCH | MM/IN | | NTS | METRIC | | | | |
| | | | 4 PLACES | ± --- | ± --- | DRAWN BY | DATE | TITLE | | | | |
| | | | 3 PLACES | ± --- | ± .010 | CHECKED BY | DATE | POWER CONN. RECEPTACLE P-S-P CONFIGURATION VERT. PRESS-FIT, W/G POST | | | | |
| 2 PLACES | ± 0.25 | ± --- | APPROVED BY | DATE | molex DOCUMENT NO. SD-87633-013 SHEET NO. 2 OF 3 | | | | | | | |
| 1 PLACE | ± --- | ± --- | SKTOH | 2002/11/21 | | | | | | | | |
| 0 PLACE | ± | ± | MATERIAL NO. | | SEE TABLE | | | | | | | |
| DRAFT WHERE APPLICABLE MUST REMAIN WITHIN DIMENSIONS | | | SIZE | THIS DRAWING CONTAINS INFORMATION THAT IS PROPRIETARY TO MOLEX INCORPORATED AND SHOULD NOT BE USED WITHOUT WRITTEN PERMISSION | | | | | | | | |

| PART NUMBER | P-S-P CONFIGURATION | | | RECESSED POWER CIRCUIT# | DIMENSIONS | | | | | | | | BOARDLOCK OPTION  | PACKAGING |
|-------------|---------------------|--------|-------------|----------------------------|-----------------|-----------------|-----------------|----------------|----------------|----------------|----------------|--------------|--|-----------|
| | POWER BETA | SIGNAL | POWER ALPHA | | A | B | C | D | E | F | G | H | | |
| 87633-1000 | 5 | 24 | 3 | NIL | 82.54 3.250 | 74.93 2.950 | 73.65 2.900 | 59.69 2.350 | 27.94 1.100 | 12.70 .500 | 15.24 .600 | 3.43 .135 | NIL | TRAY |
| 87633-1002 | 4 | 24 | 4 | NIL | 82.54 3.250 | 74.93 2.950 | 73.65 2.900 | 59.69 2.350 | 21.59 .850 | 12.70 .500 | 21.59 .850 | 3.43 .135 | | |
| 87633-1003 | 3 | 24 | 3 | NIL | 69.84 2.750 | 62.23 2.450 | 60.95 2.400 | 46.99 1.850 | 15.24 .600 | 12.70 .500 | 15.24 .600 | 3.43 .135 | | |
| 87633-1004 | 2 | 24 | 4 | NIL | 69.84 2.750 | 62.23 2.450 | 60.95 2.400 | 46.99 1.850 | 8.89 .350 | 12.70 .500 | 21.59 .850 | 3.43 .135 | | |
| 87633-1005 | 2 | 48 | 2 | A2, B2 | 72.38 2.850 | 64.77 2.550 | 63.49 2.500 | 49.53 1.950 | 8.89 .350 | 27.94 1.100 | 8.89 .350 | 3.43 .135 | YES | |
| 87633-1011 | 7 | 32 | 6 | NIL | 119.38 4.700 | 111.76 4.400 | 110.48 4.350 | 96.52 3.800 | 40.64 1.600 | 17.78 .700 | 34.29 1.350 | 3.43 .135 | NIL | |
| 87633-1013 | 1 | 12 | 1 | NIL | 36.83 1.450 | 29.21 1.150 | 27.94 1.100 | 13.97 .550 | 2.54 .100 | 5.08 .200 | 2.54 .100 | 3.43 .135 | | |
| 87633-1021 | 6 | 32 | 7 | A1,A2,A3,A4 B1,B2,B5,B6 | 119.38 4.700 | 111.76 4.400 | 110.48 4.350 | 96.52 3.800 | 34.29 1.350 | 17.78 .700 | 40.64 1.600 | 3.43 .135 | YES | |
| 87633-1022 | 4 | 4 | 4 | NIL | 69.85 2.750 | 62.23 2.450 | 60.96 2.400 | 46.99 1.850 | 21.59 .850 | 00.00 0.000 | 21.59 .850 | 3.43 .135 | YES | |
| 87633-1014 | 2 | 16 | 4 | A3,A4,B2 | 64.77 2.550 | 57.15 2.250 | 55.88 2.200 | 41.91 1.650 | 8.89 .350 | 7.62 .300 | 21.59 .850 | 3.43 .135 | NIL | |
| 87633-1024 | 2 | 24 | 2 | A2, B2 | 57.15 2.250 | 49.53 1.950 | 48.26 1.900 | 34.29 1.350 | 8.89 .350 | 12.70 .5000 | 8.89 .350 | 3.43 .135 | YES | |
| 87633-1028 | | | | | | | | | | | | | NIL | |
| 87633-1026 | 4 | 48 | 4 | NIL | 97.79 3.850 | 90.17 3.550 | 88.90 3.500 | 74.93 2.950 | 21.59 0.850 | 27.94 1.100 | 21.59 0.850 | 3.43 .135 | YES | |
| 87633-1029 | 2 | 16 | 4 | NIL | 64.77 2.550 | 57.15 2.250 | 55.88 2.200 | 41.91 1.650 | 8.89 .350 | 7.62 .300 | 21.59 .850 | 3.43 .135 | NIL | |



BOARDLOCK OPTION



ISOMETRIC VIEW

| | | | | | | |
|--|---|--|-----------------|-------|--------------|---|
| REVISED EC NO: S2014-0060 DRWN:SKANG 2013/07/15 CHKD:MLONG 2013/09/06 APPR:MLONG 2013/09/09 | QUALITY SYMBOLS | GENERAL TOLERANCES (UNLESS SPECIFIED) | DIMENSION STYLE | SCALE | DESIGN UNITS | THIRD ANGLE PROJECTION |
| | $\nabla_A = 0$ $\nabla_E = 0$ $\nabla_F = 0$ | mm INCH 4 PLACES ± --- ± --- 3 PLACES ± --- ± .010 2 PLACES ± 0.25 ± --- 1 PLACE ± --- ± --- 0 PLACE ± ± | MM/IN | NTS | METRIC | |
| | DRAFT WHERE APPLICABLE MUST REMAIN WITHIN DIMENSIONS | DRAWN BY: KMG0H DATE: 2002/11/19 CHECKED BY: DATE: APPROVED BY: DATE: 2002/11/21 SKTOH 2002/11/21 | | | | TITLE POWER CONN. RECEPTACLE P-S-P CONFIGURATION VERT. PRESS-FIT,W/G POST |
| | MATERIAL NO. SEE TABLE | | | | | molex DOCUMENT NO. SD-87633-013 SHEET NO. 3 OF 3 |