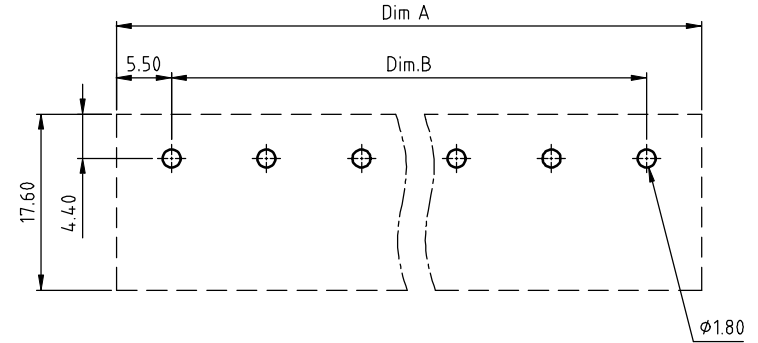
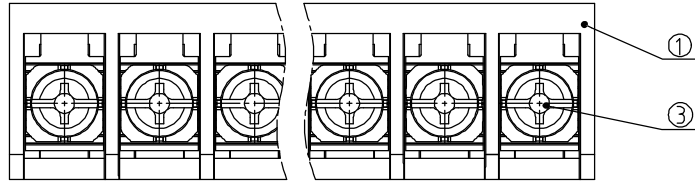
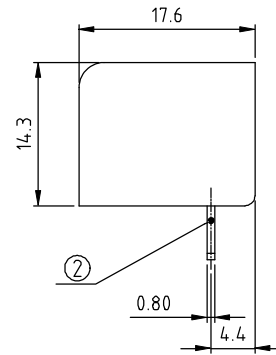
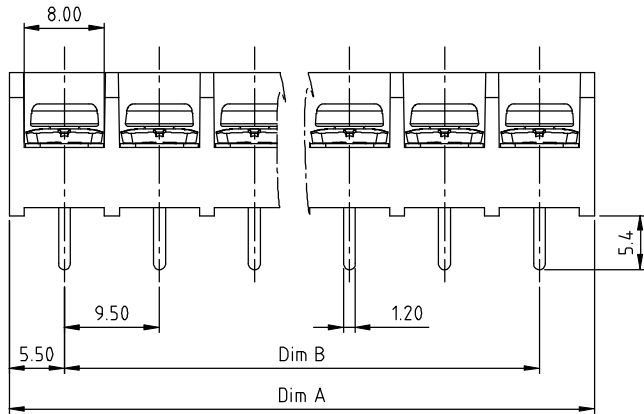


PRODUCT NUMBER	PITCH
YK441xx0x0JOG	9.50 mm



RECOMMENDED P.C.B LAYOUT  
TOP VIEW



MATERIALS ELECTRICAL: cULus CQC  
 RATED VOLTAGE & CURRENT: 300 V, 30A / 300V 24A  
 WITHSTAND VOLTAGE: AC2500V/min  
 INSULATION RESISTANCE: 1000 MΩ OR MORE AT DC 500 V  
 OPERATING TEMPERATURE RANG: -40 °C ~ +115 °C  
 SCREW TORQUE VALUE: 10.54 Lb-In. / 0.8Nm  
 WIRE RANGE: 22 - 10 AWG / 22-14 AWG  
 1) MOLDED PARTS: Thermoplastic, UL 94 V-0 BLACK  
 2) TERMINAL: BRASS, 0.8t  
 3) TERMINAL SCREWS: STEEL, M3.5  
 APPROVAL:

A

A

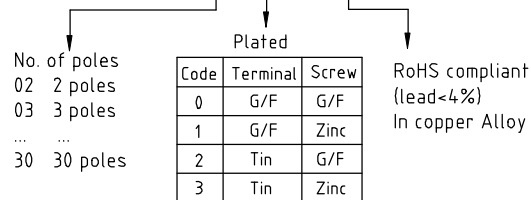
DIMENSION

Dim A	N×9.5+1.5
Dim B	(N-1)×9.5

N=Number of poles

Poles	Tolerance
2p-4p	±0.20
5p-8p	±0.25
9p-16p	±0.35
17p-23p	±0.40
24p-30p	±0.50

PART NO.: YK 441xx 0 x 0 JOG



Code	Terminal	Screw
0	G/F	G/F
1	G/F	Zinc
2	Tin	G/F
3	Tin	Zinc

B

B

mat'l. code				surface ASME Y14.5 ✓		tolerance ASME Y14.5		projection		product family TERMINAL BLOCK	
ltr	ecn no	dr	date	tolerances unless otherwise specified						title	
				angles	X.±0.5		MM		TERMINAL BLOCK		
				fin	X.X±0.3		scale		BARRIER TYPE		
				X'±1"	X.XX±0.1				dwg no YK441xx0x0JOG sheet 1 of 1 size A4		
				dr	EVAN LU	061614			type CUSTOMER Drawing		
				enr	EVAN LU	061614					
				chr	HANKE FENG	061614					
				appd	SHI JUN	061614					
sheet index	revision sheet	A	1								