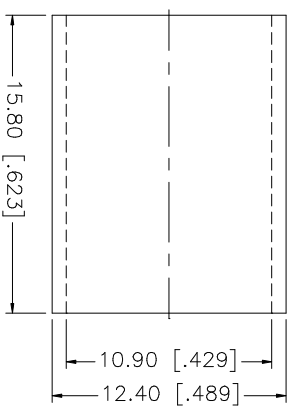
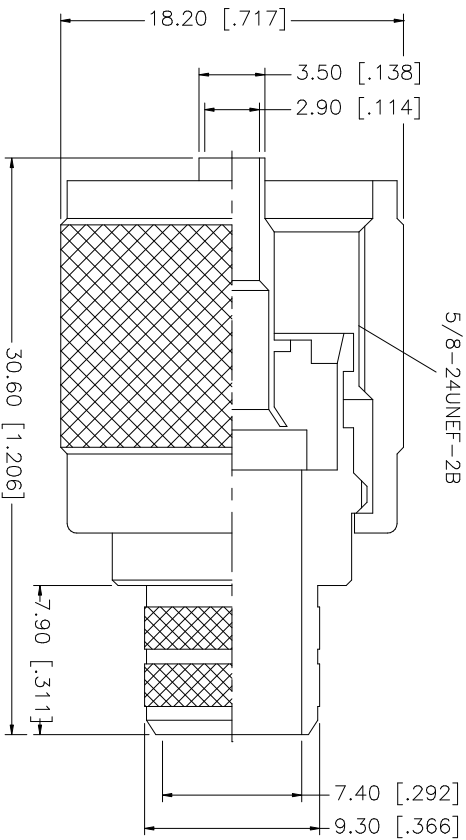
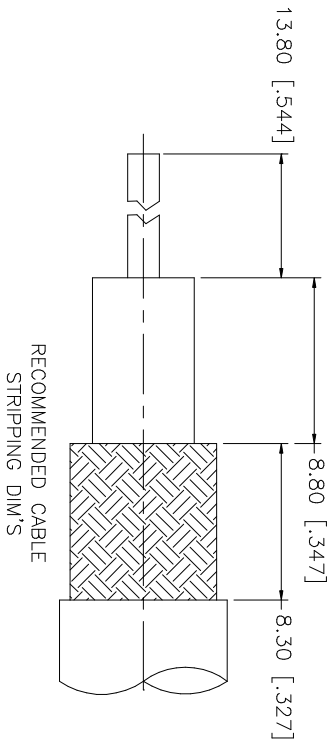


REV.	DATE	DESCRIPTION
NC	04/14/03	INITIAL RELEASE



- NOTE:
1. CRIMPED FERRULE  
HEX CRIMP SIZE .429"
  2. CRIMPED CONTACT PIN  
HEX CRIMP SIZE 118"

8																				
8																				
7																				
6																				
5																				
4	FERRULE	COPPER	NICKEL	1																
3	CONTACT PIN	BRASS	GOLD	1																
2	INSULATOR	PHENOLIC	YELLOW	1																
1	BODY	BRASS	NICKEL	1																
	DESCRIPTION	MATERIAL	FINISH	QTY																
UNLESS OTHERWISE SPECIFIED DIMENSIONS ARE IN MILLIMETERS, DIMENSIONS IN [ ] ARE IN INCHES AND FOR CUSTOMER REFERENCE ONLY.					UNLESS OTHERWISE SPECIFIED DIMENSIONS ARE IN MILLIMETERS, DIMENSIONS IN [ ] ARE IN INCHES AND FOR CUSTOMER REFERENCE ONLY.					UNLESS OTHERWISE SPECIFIED DIMENSIONS ARE IN MILLIMETERS, DIMENSIONS IN [ ] ARE IN INCHES AND FOR CUSTOMER REFERENCE ONLY.										
TOLERANCES FOR MILLIMETERS ARE:					TOLERANCES FOR MILLIMETERS ARE:					TOLERANCES FOR MILLIMETERS ARE:										
0.5 - 8mm ± 0.20mm					0.5 - 8mm ± 0.20mm					0.5 - 8mm ± 0.20mm										
8 - 30mm ± 0.40mm					8 - 30mm ± 0.40mm					8 - 30mm ± 0.40mm										
30 - 120mm ± 0.50mm					30 - 120mm ± 0.50mm					30 - 120mm ± 0.50mm										
UNLESS OTHERWISE SPECIFIED TOLERANCES FOR INCHES ARE:					UNLESS OTHERWISE SPECIFIED TOLERANCES FOR INCHES ARE:					UNLESS OTHERWISE SPECIFIED TOLERANCES FOR INCHES ARE:										
.020 - .315 = ± 0.007"					.020 - .315 = ± 0.007"					.020 - .315 = ± 0.007"										
.315 - 1.180 = ± 0.015"					.315 - 1.180 = ± 0.015"					.315 - 1.180 = ± 0.015"										
1.180 - 4.724 = ± 0.020"					1.180 - 4.724 = ± 0.020"					1.180 - 4.724 = ± 0.020"										
DO NOT SCALE DRAWING					DO NOT SCALE DRAWING					DO NOT SCALE DRAWING										
APPROVALS					DATE					DATE										
DRAWN G.R.S.					04/14/03					04/14/03										
CHECKED																				
ISSUED																				
SHEET 1 OF 1																				
CAD FILE C:/182/182130.DWG																				
PART DESCRIPTION UHF CRIMP PLUG (FOR BELDEN 8214, 9913, 9914, LMR400 CABLE)					PART NO. 182130					PART NO. 182130										
DWG. NO. 182130.DWG					REV. NC					SIZE A					SCALE NA					

**Amphenol Connex**