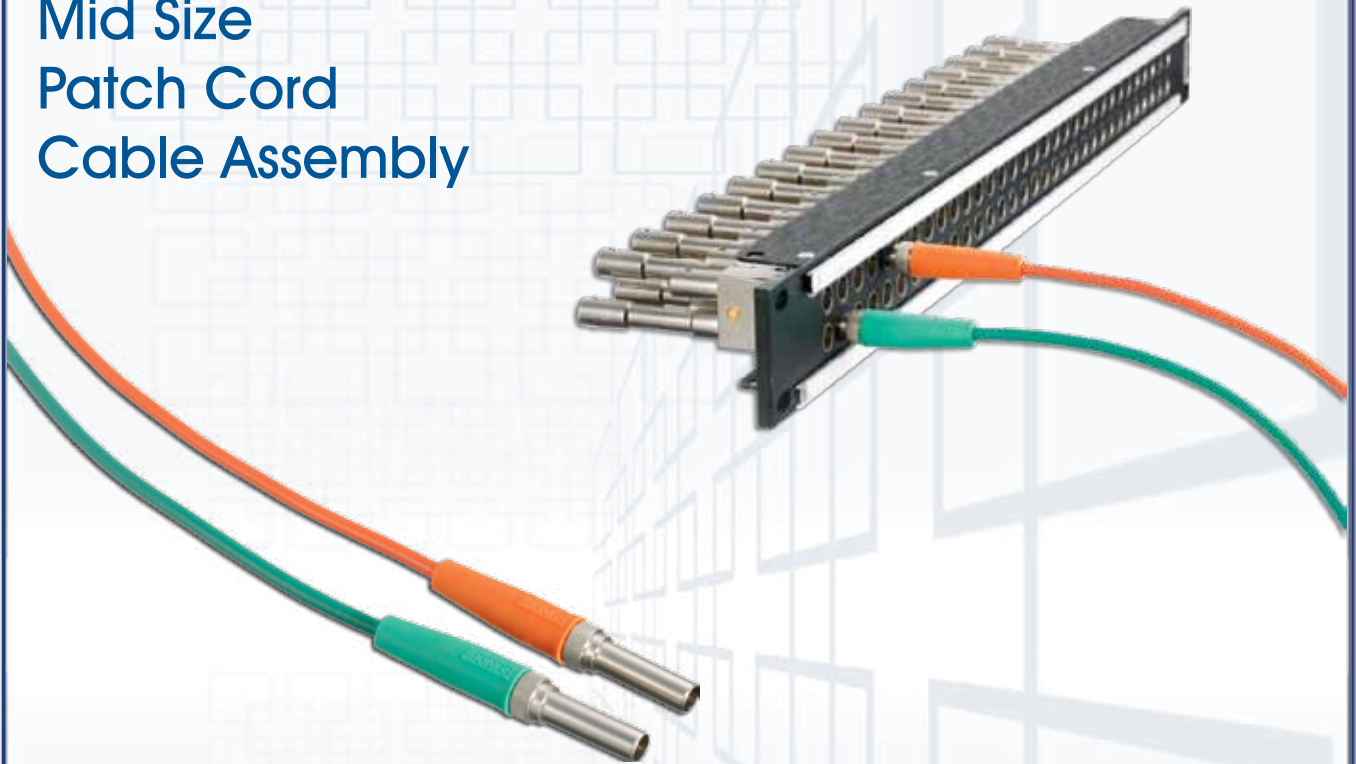


Winchester Electronics Presents...

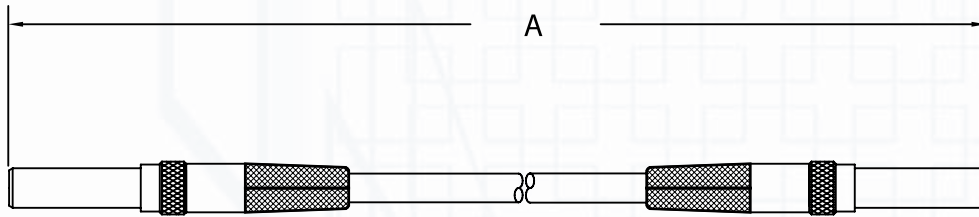
8846 Series Patch Cords

Mid Size Patch Cord Cable Assembly



Product Benefits:

- Pre-assembled for quick and easy installation
- 10 popular colors for visual signal identification or other personalization
- Matching protective boots also included
- Each assembly contains two KINGS® Mid-size 75 Ohm patch plugs (7410-10)
- Terminated to Belden 1855A or equivalent cable in a variety of lengths



Part Number	DIM A \pm 1.25
K-8846-012-YY	12.00
K-8846-024-YY	24.00
K-8846-036-YY	36.00
K-8846-048-YY	48.00
K-8846-060-YY	60.00
K-8846-072-YY	72.00
K-8846-096-YY	96.00
K-8846-120-YY	120.00
K-8846-144-YY	144.00
K-8846-288-YY	288.00

YY	COLOR
-01	BROWN
-02	RED
-03	ORANGE
-04	YELLOW
-05	GREEN
-06	BLUE
-07	VIOLET
-08	GREY
-09	WHITE
-10	BLACK

K-8846-XXX-YY



Connecting Innovation to Application[®]