

NOTES:

1.  $\text{\textcircled{C}}$  REPRESENTS A CRITICAL DIMENSION.
2. POSITIONS -04 THRU -50 ARE TO BE TUBED.
3. POSITIONS 02 & 03 ARE TO BE LAYERED PACKAGED.
4. MAXIMUM CUT FLASH: .010[.25].
5. STAKED ALIGNMENT PIN USED AT SAMTECS DISCRETION.
6. MEASURE THE HEIGHT FROM THE EDGE, NOT THE BREAK OFF.
7. MEASURED AT BEND RADIUS, NOT END OF PIN.
8. DUE TO THE HIGH AMOUNT OF INSERTION FORCE NEEDED, THE -LC OPTION IS NOT COMPATIBLE WITH AUTO PLACEMENT. SAMTEC RECOMMENDS MANUAL PLACEMENT FOR ALL ASSEMBLIES WITH THE -LC OPTION.
9. MINIMUM PUSHOUT FORCE: .5 LB.
10. MAXIMUM COPLANARITY .0060[0.152].

DO NOT SCALE FROM THIS PRINT

SQW-1XX-01-XXX-D-VS-XX-XXX

No OF POSITIONS

-02 THRU -50 (PER ROW)

LEAD STYLE

-01

PLATING SPECIFICATION

- F: 3 $\mu$ " FLASH SELECTIVE GOLD IN CONTACT AREA MATTE TIN ON TAIL
- L: 10 $\mu$ " LIGHT SELECTIVE GOLD IN CONTACT AREA MATTE TIN ON TAIL
- S: 30 $\mu$ " SELECTIVE GOLD IN CONTACT AREA MATTE TIN ON TAIL
- STL: 30 $\mu$ " SELECTIVE GOLD IN CONTACT AREA TIN/LEAD (93/7+/-5%) TAIL
- H: 30 $\mu$ " HEAVY GOLD IN CONTACT AREA 3 $\mu$ " ON TAIL
- FM: 3 $\mu$ " FLASH SELECTIVE GOLD IN CONTACT AREA MATTE TIN ON TAIL
- LM: 10 $\mu$ " LIGHT SELECTIVE GOLD IN CONTACT AREA MATTE TIN ON TAIL
- SM: 30 $\mu$ " SELECTIVE GOLD IN CONTACT AREA MATTE TIN ON TAIL

POLARIZATION OPTION

-XXX: INDICATES POSITION POLARIZED (USE PK-07-N, SEE FIG 2, SHT 2)

OPTION

- A: STAKED & MOLDED IN ALIGNMENT PIN (5 POS MIN) (USE SM-A8H, SEE FIG 3, SHT 2)
- LC: LOCKING CLIP (5 POS MIN) (USE LC-07-TM, SEE FIG 4, SHT 2 & NOTE 8)
- P: PICK & PLACE PAD (4 POS MIN) (USE LMP-03, SEE FIG 6, SHT 2)
- TR: TAPE & REEL (AVAILABLE POS 4 THRU 28)
- K: POLYAMIDE FILM PAD (4 POS MIN) (USE K-DOT-.167-.281-.005, SEE FIG 7, SHT 2)

TAIL STYLE

-VS: VERTICAL

ROW SPECIFICATION

-D: DOUBLE (USE SQW-XX-D)

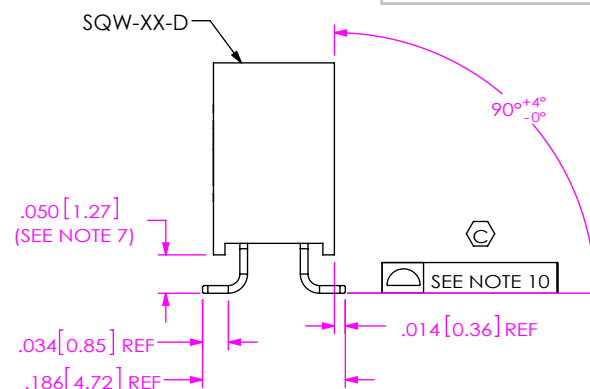
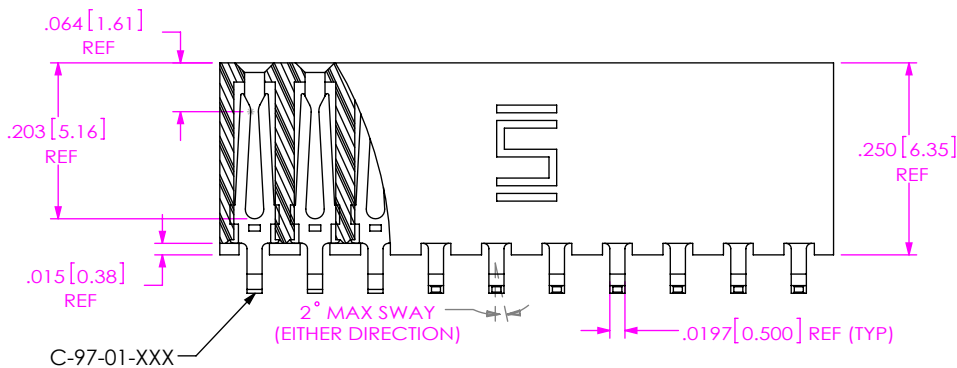
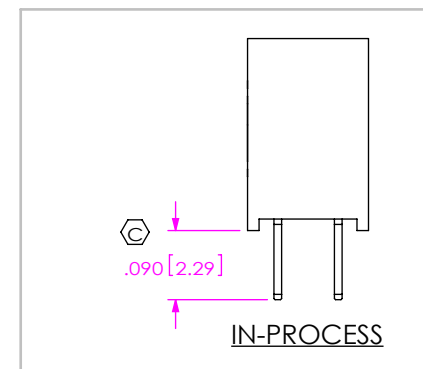
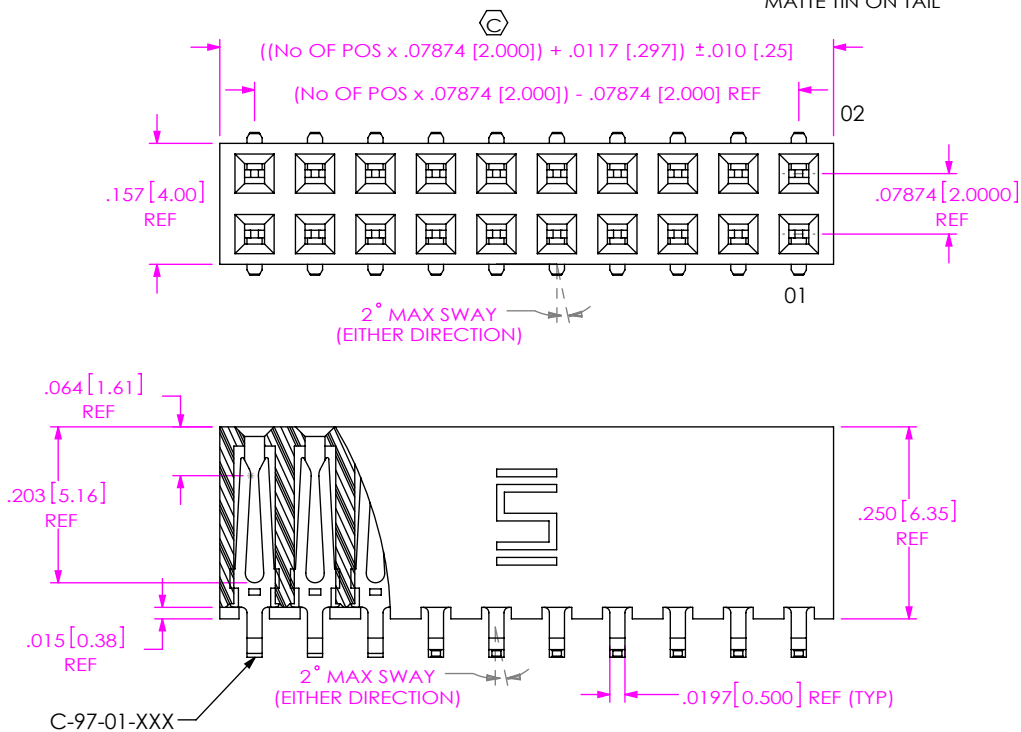


FIG 1  
SQW-110-01-XXX-D-VS SHOWN

UNLESS OTHERWISE SPECIFIED, DIMENSIONS ARE IN INCHES. TOLERANCES ARE:  
DECIMALS ANGLES  
.XX: ±.01 [.3]  
.XXX: ±.005 [.13]  
.XXXX: ±.0020 [.051]

PROPRIETARY NOTE  
THIS DOCUMENT CONTAINS CONFIDENTIAL AND PROPRIETARY INFORMATION AND ALL DESIGN, MANUFACTURING, REPRODUCTION, USE, PATENT RIGHTS AND SALES RIGHTS ARE EXPRESSLY RESERVED BY SAMTEC, INC. THIS DOCUMENT SHALL NOT BE DISCLOSED, IN WHOLE OR PART, TO ANY UNAUTHORIZED PERSON OR ENTITY NOR REPRODUCED, TRANSFERRED OR INCORPORATED IN ANY OTHER PROJECT IN ANY MANNER WITHOUT THE EXPRESS WRITTEN CONSENT OF SAMTEC, INC.



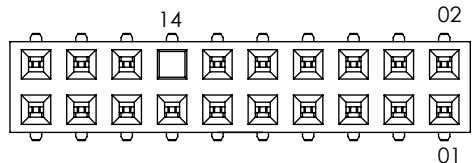
520 PARK EAST BLVD, NEW ALBANY, IN 47150  
PHONE: 812-944-6733 FAX: 812-948-5047  
e-Mail info@SAMTEC.com code 55322

MATERIAL: DO NOT SCALE DRAWING SHEET SCALE: 4:1  
INSULATOR: LCP, UL 94 VO, COLOR: BLACK  
TERMINAL: PHOSPHOR BRONZE

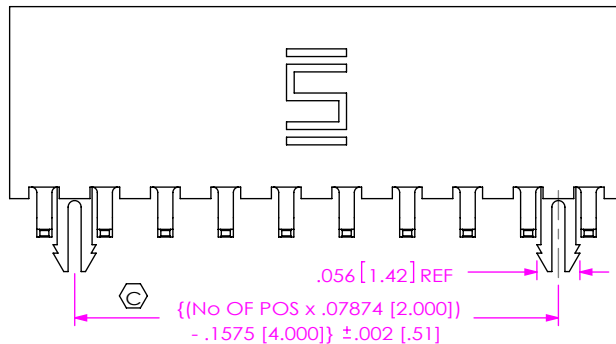
DESCRIPTION:  
2MM SOCKETS TRIP ASSEMBLY

DWG. NO.  
SQW-1XX-01-XXX-D-VS-XX-XXX

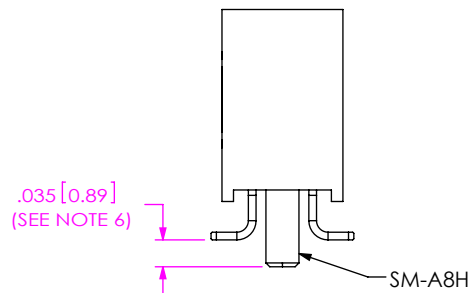
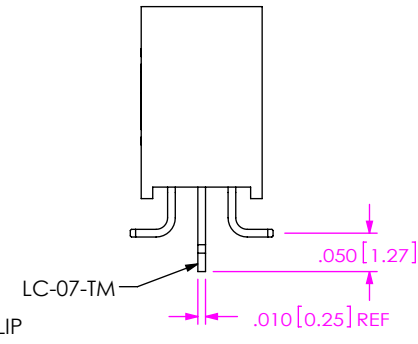
BY: DEAN P 04/22/1997 SHEET 1 OF 3



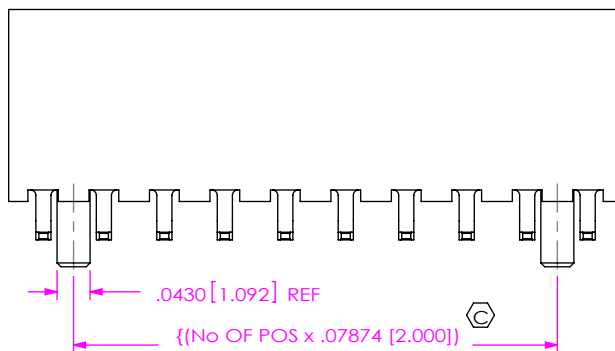
**FIG 2**  
POLARIZATION OPTION LOCATION  
INSERT PK-07-N INTO SPECIFIED  
POSITION AND BREAK OFF TAB  
SQW-110-01-XXX-D-VS-014 SHOWN  
(DIFFERENT AS SHOWN, OTHERWISE SAME AS FIG 1)



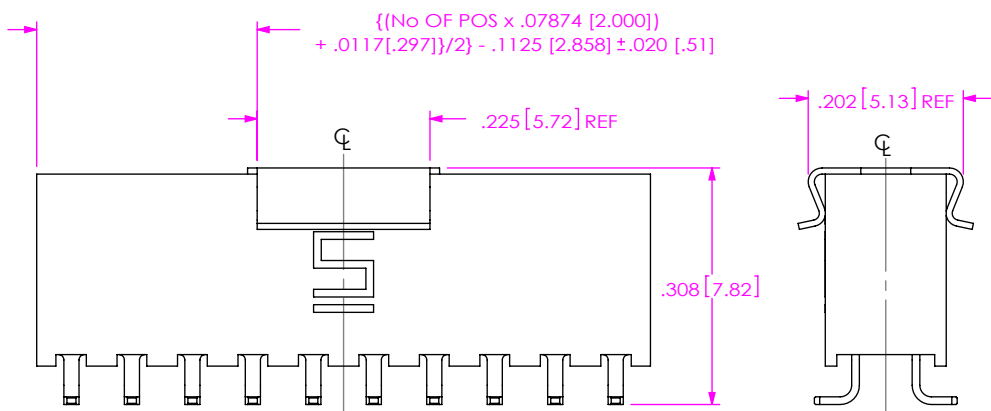
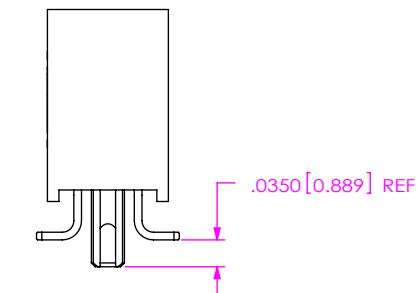
**FIG 4**  
-LC: LOCKING CLIP  
(5 POS MIN)  
SQW-110-01-XXX-D-VS-LC SHOWN  
(DIFFERENT AS SHOWN, OTHERWISE SAME AS FIG 1)



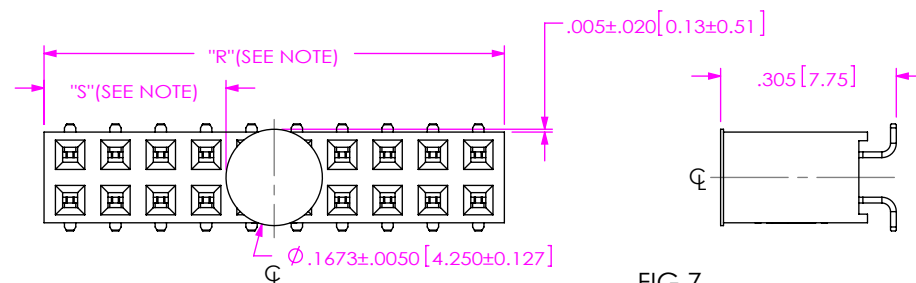
**FIG 3**  
-A: STAKED ALIGNMENT PIN  
(5 POS MIN)  
SQW-110-01-XXX-D-VS-A SHOWN  
(DIFFERENT AS SHOWN, OTHERWISE SAME AS FIG 1)



**FIG 5**  
-A: MOLDED ALIGNMENT PIN  
(5 POS MIN)  
SQW-110-01-XXX-D-VS-A SHOWN  
(DIFFERENT AS SHOWN, OTHERWISE SAME AS FIG 1)



**FIG 6**  
-P: PICK & PLACE PAD  
(4 POS MIN)  
SQW-110-01-XXX-D-VS-P SHOWN  
(DIFFERENT AS SHOWN, OTHERWISE SAME AS FIG 1)



NOTE:  
"R" = USED MEASURED DIMENSION (REF)  
"S" = {"R" - .1673 [4.25]} / 2 ±.020 [.51]

**FIG 7**  
POLYAMIDE FILM PAD  
(4 POS MIN)  
SQW-110-01-XXX-D-VS-K SHOWN  
(DIFFERENT AS SHOWN, OTHERWISE SAME AS FIG 1)

**PROPRIETARY NOTE**  
THIS DOCUMENT CONTAINS CONFIDENTIAL AND  
PROPRIETARY INFORMATION AND ALL DESIGN,  
MANUFACTURING, REPRODUCTION, USE, PATENT RIGHTS  
AND SALES RIGHTS ARE EXPRESSLY RESERVED BY SAMTEC,  
INC. THIS DOCUMENT SHALL NOT BE DISCLOSED, IN WHOLE  
OR PART, TO ANY UNAUTHORIZED PERSON OR ENTITY NOR  
REPRODUCED, TRANSFERRED OR INCORPORATED IN ANY  
OTHER PROJECT IN ANY MANNER WITHOUT THE EXPRESS  
WRITTEN CONSENT OF SAMTEC, INC.

DO NOT SCALE DRAWING

SHEET SCALE: 4:1

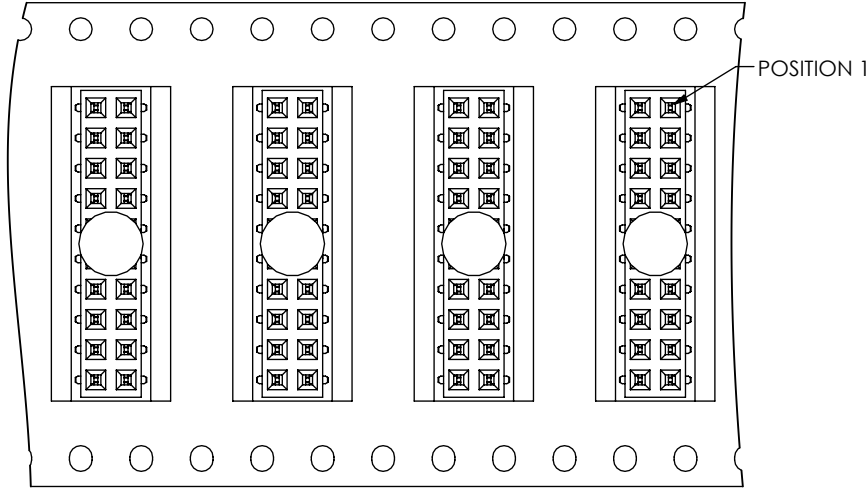


520 PARK EAST BLVD, NEW ALBANY, IN 47150  
PHONE: 812-944-6733 FAX: 812-948-5047  
e-Mail info@SAMTEC.com code 55322

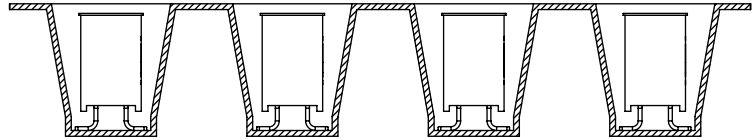
DESCRIPTION:  
2MM SOCKETS TRIP ASSEMBLY

DWG. NO.  
**SQW-1XX-01-XXX-D-VS-XX-XXX**

BY: DEAN P 04/22/1997 SHEET 2 OF 3

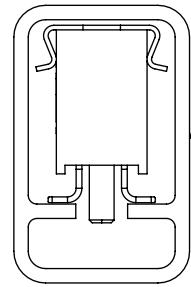


USER DIRECTION OF UNREELING →  
POCKET NOT DETAILED



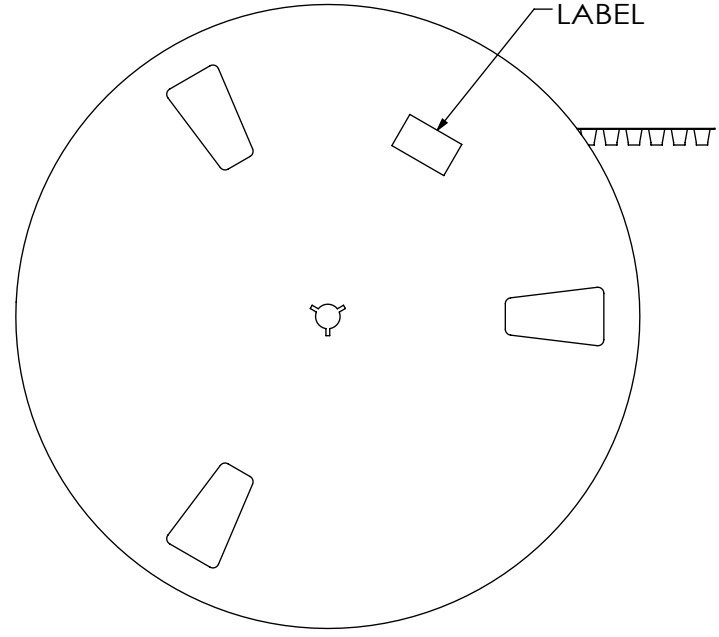
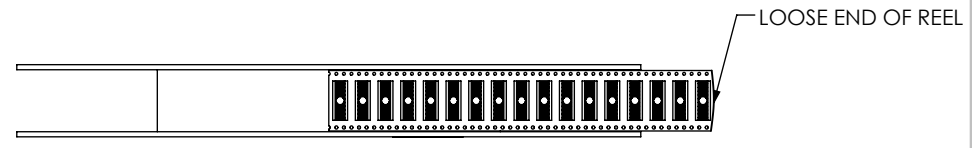
PARTS TO COME OFF REEL AS SHOWN  
WITH POCKETS FACING UP

TAPE & REEL VIEW



PT-1-24-03-09  
TP-09

TUBE VIEW



UNWINDING DIRECTION →

REEL

**PROPRIETARY NOTE**  
THIS DOCUMENT CONTAINS CONFIDENTIAL AND PROPRIETARY INFORMATION AND ALL DESIGN, MANUFACTURING, REPRODUCTION, USE, PATENT RIGHTS AND SALES RIGHTS ARE EXPRESSLY RESERVED BY SAMTEC, INC. THIS DOCUMENT SHALL NOT BE DISCLOSED, IN WHOLE OR PART, TO ANY UNAUTHORIZED PERSON OR ENTITY NOR REPRODUCED, TRANSFERRED OR INCORPORATED IN ANY OTHER PROJECT IN ANY MANNER WITHOUT THE EXPRESS WRITTEN CONSENT OF SAMTEC, INC.

DO NOT SCALE DRAWING  
SHEET SCALE: 4:1



520 PARK EAST BLVD, NEW ALBANY, IN 47150  
PHONE: 812-944-6733 FAX: 812-948-5047  
e-Mail info@SAMTEC.com code 55322

DESCRIPTION: 2MM SOCKETS TRIP ASSEMBLY

DWG. NO. SQW-1XX-01-XXX-D-VS-XX-XXX

BY: DEAN P 04/22/1997 SHEET 3 OF 3