

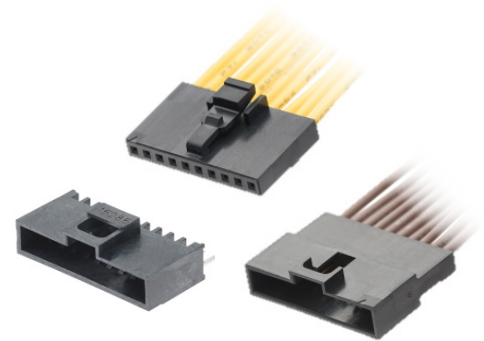
Milli-Grid™ Single-Row Connectors with Positive Lock



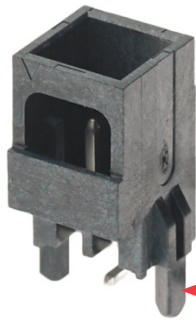
Milli-Grid™ single-row connectors make wire-to-wire and wire-to-board signal configurations easy and cost-efficient for data communication, consumer and other applications

Features and Benefits

Shrouded single-row design	For greater terminal protection and space-savings
Integral positive lock	Ensures secure mating and simplifies unmating
Choice of 2.60, 3.60 and 4.60mm soldertail lengths	Enables the use of PCBs in different thickness for through-hole style applications
Array of gold and tin plating options	Meets the needs for high performance or cost-efficiency
Retention peg for SMT termination (optional)	For secure connector-to-PCB processing



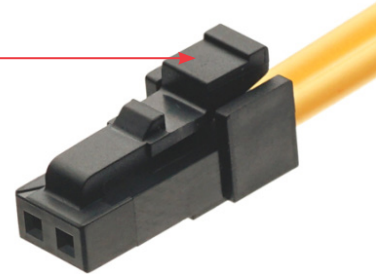
Example of a 10-circuit Milli-Grid™ Single-Row Connector solution (Remark: Wires supplied in the photo are for illustration purposes only)



2-circuit Vertical SMT Header (Series 151062)

Retention peg ensures connectors are secured to the PCB before solder-processing

Wide latch-pad surface allows the user to unmate a connection easily



2-circuit Crimped Receptacle Assembly (Series 151100 housing is used with the series 50394 terminal)

Applications

Data Communications

- High-end Computing (Servers)
- Personal Computers

Telecommunications/Networking

- Infrastructure

Consumer/Home Appliance

- Refrigerators
- Washing Machines and more



Personal computers



Servers



Home appliances

Milli-Grid™ Single-Row Connectors with Positive Lock



Specifications

Reference Information

Packaging:

Tube (Header)

Bulk (Crimp Header & Receptacle)

UL File No.: E29179

CSA File No.: 1585720 (LR 19980)

Mates With:

151062/63/64/65 with 151100 housing

151098 with 151100 housing

Use With:

151100 housing with 50394 terminals

151098 housing with 151087 terminals

Terminal Used: Copper Alloy

Designed In: Millimeters

RoHS: Yes

Halogen Free: Yes

Glow Wire Compliant: No

Electrical

Voltage (max.): 125VAC

Current (max.): 2.5A

Low Level Contact Resistance:

30 milliohms

5 milliohms (Crimp terminal)

Insulation Resistance: 1000 Megohms

Mechanical

Contact Insertion Force:

35N max. (latch engaged)

3.5N per circuit max (latch disengaged)

Contact Retention to Housing:

45N min. (latch engaged)

0.3N per circuit min. (latch disengaged)

Peg Insertion Force in PCB: 35 to 45N

Peg Retention Force in PCB: 5N min.

Durability (min.):

50 cycles for Gold-plated connector

25 cycles for Tin-plated connector

Physical

Housing (Header): LCP, Glass-filled, UL94V-0, Black

Housing (Crimp Receptacle): PBT, UL94V-0, Black

Housing (Crimp Header):

PBT, Glass-filled, UL94V-0, Black

Contact: Copper Alloy

Plating:

Contact Area — Refer to table below

Solder Tail Area — 2.00µm Matte Tin (Sn)

Underplating — 1.25µm Nickel (Ni)

Operating Temperature: -40 to +70°C

Ordering Information

Series No.	Components	Part Number Legend
50394	Crimp Receptacle Terminal	50394 – 805 X ↑ 1 – 0.38µm Gold 2 – 0.76µm Gold 4 – 0.05µm Gold 5 – 2.50µm Tin
150187	Crimp Header Terminal	151087 – 8X01 ↑ 1 – 2.50µm Tin 2 – 0.05µm Gold 3 – 0.38µm Gold 4 – 0.76µm Gold

Series No.	Components	Part Number Legend
151062	PCB Header, Vertical, SMT	Plating Options - Without Cap 151062 – 1X XX ↑ 0 – 2.50µm Tin 1 – 0.05µm Gold 2 – 0.38µm Gold 3 – 0.76µm Gold Plating Options - With Cap 151062 – 1X XX ↑ 4 – 2.50µm Tin 5 – 0.05µm Gold 6 – 0.38µm Gold 7 – 0.76µm Gold Circuit size - With or Without Peg 151062 – 1X XX ↑ 04 to 10 (4 to 10 circuits without peg) 52 to 60 (2 to 10 circuits with peg)

Series No.	Components	Part Number Legend
151063	PCB Header, Vertical, Through-hole	Soldertail Length Options 151063 – X XX X ↑ 3 – 2.60mm 4 – 3.60mm 5 – 4.60mm Plating Options - Without Cap 151063 – X XX X ↑ 0 – 2.50µm Tin 1 – 0.05µm Gold 2 – 0.38µm Gold 3 – 0.76µm Gold Plating Options - With Cap 151063 – X XX X ↑ 4 – 2.50µm Tin 5 – 0.05µm Gold 6 – 0.38µm Gold 7 – 0.76µm Gold Circuit size - With or Without Peg 151063 – XX XX ↑ 02 to 10 (2 to 10 circuits without peg) 52 to 60 (2 to 10 circuits with peg)

Series No.	Components	Part Number	Circuits
151100	Crimp Receptacle Housing	151100-0002	2
		151100-0003	3
		151100-0004	4
		151100-0005	5
		151100-0006	6
		151100-0007	7
		151100-0008	8
		151100-0009	9
		151100-0010	10
		151098	Crimp Header Housing
151098-0003	3		
151098-0004	4		
151098-0005	5		
151098-0006	6		
151098-0007	7		
151098-0008	8		
151098-0009	9		
151098-0010	10		

Series No.	Components	Part Number Legend
151064	PCB Header, Right Angle SMT	Plating Options - Without Cap 151064 – 1 XX X ↑ 0 – 2.50µm Tin 1 – 0.05µm Gold 2 – 0.38µm Gold 3 – 0.76µm Gold Circuit size - With or Without Peg 151064 – 1X XX ↑ 02 to 10 (2 to 10 circuits without peg) 52 to 60 (2 to 10 circuits with peg)

Series No.	Components	Part Number Legend
151065	PCB Header, Vertical, Through-hole	Soldertail Length Options 151065 – X XX X ↑ 3 – 2.60mm 4 – 3.60mm 5 – 4.60mm Plating Options 151065 – X XX X ↑ 0 – 2.50µm Tin 1 – 0.05µm Gold 2 – 0.38µm Gold 3 – 0.76µm Gold Circuit size - With or Without Peg 151065 – XX XX ↑ 02 to 10 (2 to 10 circuits without peg) 52 to 60 (2 to 10 circuits with peg)