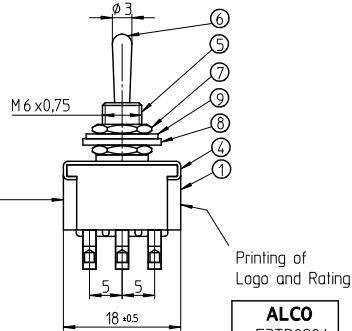
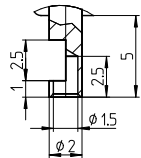


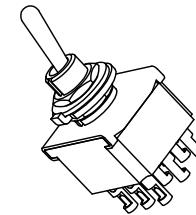
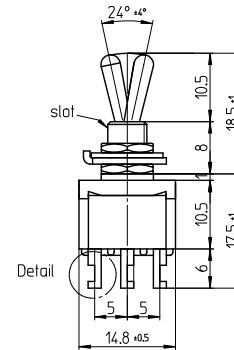
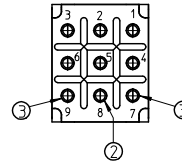
Detail
Maßstab 5:1



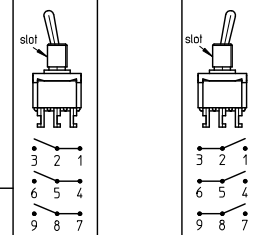
Date Code Printing
last digit of year
A-L = January to December
Day

Printing of
Logo and Rating

| | |
|-------------|------------|
| ALCO | Model No. |
| F3TD0904 | |
| 6A AC 250V | Rating |
| ON - ON | SW. Funct. |



Function Chart



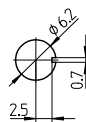
| TE PN | Part | ON | --- | ON |
|-------------|----------|----|-----|----|
| 2-6437630-8 | F3TD0904 | ON | --- | ON |

Notes:

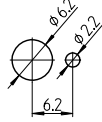
Operating temperature -20°C to +70°C

All materials and finishes comply with RoHS directive

Panel Cutout



Panel Cutout
using Ring

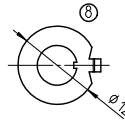


Nut



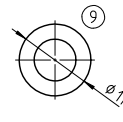
1.5 thick

Ring



1 thick

L washer



0.63 thick

Specifications

| TE PN | Part | Rating | Initial Contact Resistance | Insulation Resistance | Dielectric Strength | Endurance |
|-------------|----------|--------------------------|--|----------------------------------|--------------------------------------|---|
| 2-6437630-8 | F3TD0904 | AC 125V 6A AC 250V 6A | MAX 10 milliohms at DC 2 ~ 4V 1A | MIN 1000 M Ohms at DC 500V | AC 1kV/1 min (AC 1.2kV/1 sec) | electrically 50,000 cycles at 20 cycles/min (rated load resistive) mechanically 100,000 cycles at 20 cycles/min |

Materials Chart

| PART NO. | PART NAME: | MATERIAL/SURFACE: | OPTIONAL DESCRIPTION |
|----------|------------|-------------------------|----------------------|
| 1 | Case | Polyester Resin | |
| 2 | F Contact | 99.98% silver + C3602BD | Ep-Cu/Ni3,AuFb |
| 3 | Common | C3602BD | Ep-Cu/Ni3,AuFb |
| 4 | Frame | SUS | |
| 5 | Bushing | C3602BD | Ep-Cu/Ni3b |
| 6 | Actuator | C3602BD | Ep-Cu/Ni3,Cr1b |
| 7 | Nut | C3602BD | Ep-Cu/Ni3b |
| 8 | Ring | SPCC | Ep-Fe/Cu2,Ni3b |
| 9 | L washer | SK-5 | Ep-Fe/Cu2,Ni4b |

TOLERANCES UNLESS OTHERWISE SPECIFIED ACCORDING TO ISO 8015 and ISO 2768-1 DIMENSIONS: mm
 last dimen. / Präzifmaß (), auxiliary dimen. / Hilfmaß (), theor. dimen. / theort. Maß (),
 production control dimen. / Fertigungsmaß (), dimen. for measure. technology / mess techn. ret. Maß (),

| | | |
|------------|----------|---------|
| DEPARTMENT | | D&E |
| DRAWER | 03012007 | SA00871 |
| CHECKED | | |
| APPROVED | | |

ECR-NO.: DATE NAME INFO DATE NAME

SCALE: NAME: DWG NO: **1968516**

Toggle Switch triple pole
Standard Lever
OPTIONAL NO: Customer Drawing

REPLACEMENT FOR: DWG LOC NO: IF SHEET: 1 OF 1 REVISION: A A 2

THIS DRAWING IS A CONTROLLED DOCUMENT. HANDWRITTEN CHANGES ARE NOT ALLOWED

THIS INFORMATION IS CONFIDENTIAL AND PROPRIETARY TO TYCO ELECTRONICS AUSTRIA GMBH,
 AND ITS WORLDWIDE SUBSIDIARIES. ANY INFORMATION HEREIN MAY NOT BE DISCLOSED TO ANYONE
 OTHER THAN TYCO ELECTRONICS AUSTRIA GMBH OR TYCO ELECTRONICS AUSTRIA GMBH'S
 AUTHORIZED REPRESENTATIVE.