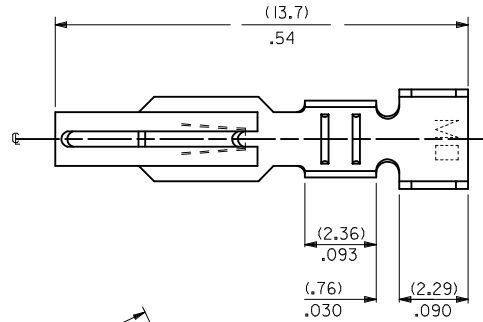
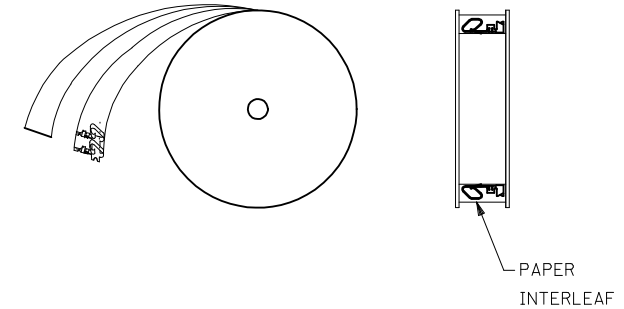
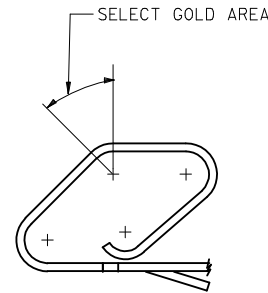
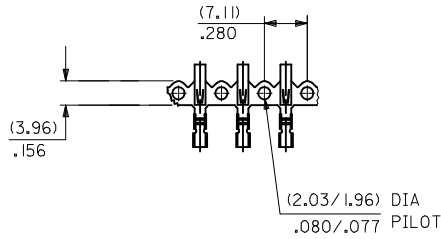
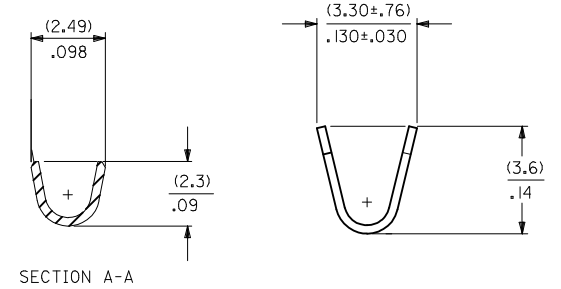
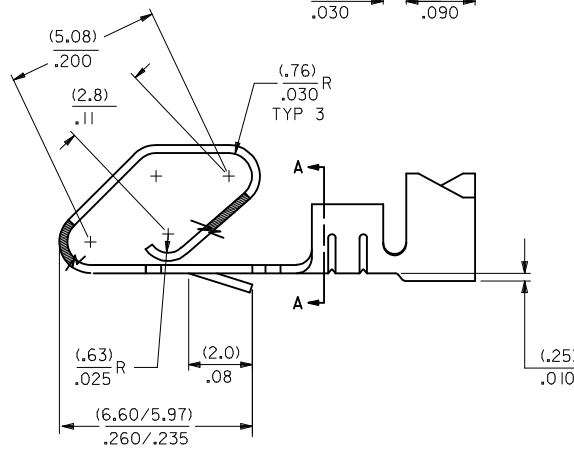
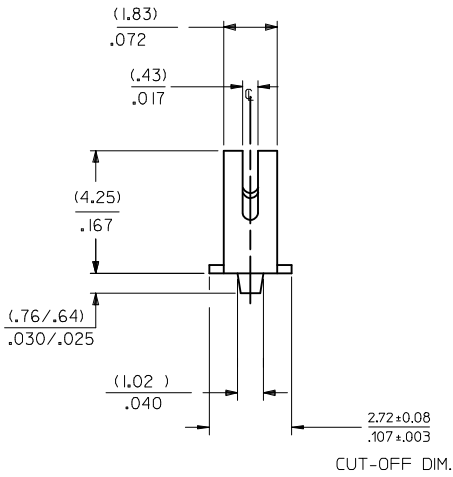


PART NO.	ENG NO.	PLATING
008-56-0113	2477-G	565
008-56-0114	2477-GL	565
008-50-0109	2477-(P909)	P909
008-50-0110	2477-(P909)L	P909



2477-***-***-***
 MATERIAL CODE
 (.25)/.010 THK
 BLANK= BRASS
 WINDING SPEC.
 BLANK=CHAIN, PER WINDING DETAIL "B"
 L=LOOSE
 OPTION CODE
 BLANK=AS SHOWN
 PLATING
 SEE NOTE 2



WINDING DETAIL "B"

- NOTES:
- MATERIAL: SEE LEGEND
 - FINISH: P909: OVERALL HOT TIN DIP: (0.00254)/.000100 MIN.
565: SELECT GOLD: (0.00051)/.000020 MIN.
OVERALL NICKEL: (0.00076)/.000030 MIN.
OVERALL GOLD FLASH: (0.00005)/.000002 MIN.
 - PRODUCT SPECIFICATION: PS-08-50
 - CRIMP ACCEPTS 18 TO 24 GA. WIRE WITH (2.79)/.110 MAX. INSULATION DIA.
 - TERMINAL FOR USE IN 2139 AND 3069 SERIES HOUSINGS WITH (2.54)/.100 MAX. INSULATION DIAMETER AND 172159 SERIES HOUSINGS WITH (2.79)/.110 MAX. INSULATION DIAMETER.
 - THIS PART CONFORMS TO CLASS B REQUIREMENTS OF COSMETIC SPECIFICATION PS-45499-002.
 - MATING TERMINALS TO ROUND PINS IS NOT RECOMMENDED.

ADD NOTE 7 EC NO: UCP2015-3216 DRWN:HKIPPER 2015/02/06 CHKD:JBELL 2015/02/06 APPR:FSM/TH 2015/02/18	QUALITY SYMBOLS ▽=0 ▽=0 ▽=0	GENERAL TOLERANCES (UNLESS SPECIFIED)		DIMENSION STYLE	SCALE	DESIGN UNITS	THIRD ANGLE PROJECTION	
		mm	INCH	MM/IN	---	INCH		
ADZ	REV	4 PLACES	± ---	± ---	DRAWN BY	DATE	TITLE	
		3 PLACES	± ---	± .010	SAMIEC	1995/03/02		KK CRIMP TERMINAL (3.96)/.156 CENTERS 18 TO 24 AWG WIRE
		2 PLACES	± 0.25	± .014	CHECKED BY	DATE	molex	
		1 PLACE	± 0.36	± ---	PATEL	1995/03/02		SD-2477-****
		0 PLACE	±	±	APPROVED BY	DATE		
		ANGULAR ±1/2°		MATERIAL NO.	DOCUMENT NO.			
		DRAFT WHERE APPLICABLE MUST REMAIN WITHIN DIMENSIONS		SEE CHART				
				SIZE	THIS DRAWING CONTAINS INFORMATION THAT IS PROPRIETARY TO MOLEX INCORPORATED AND SHOULD NOT BE USED WITHOUT WRITTEN PERMISSION			