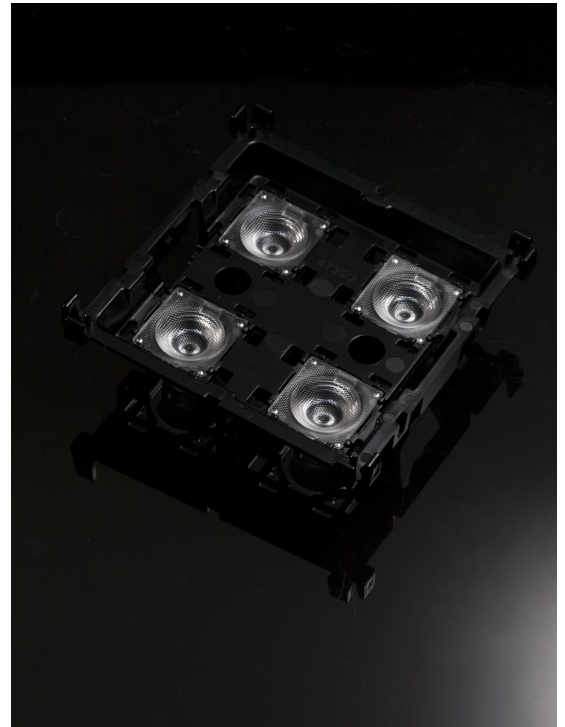


FLORENTINA-2X2-W

~40° wide beam

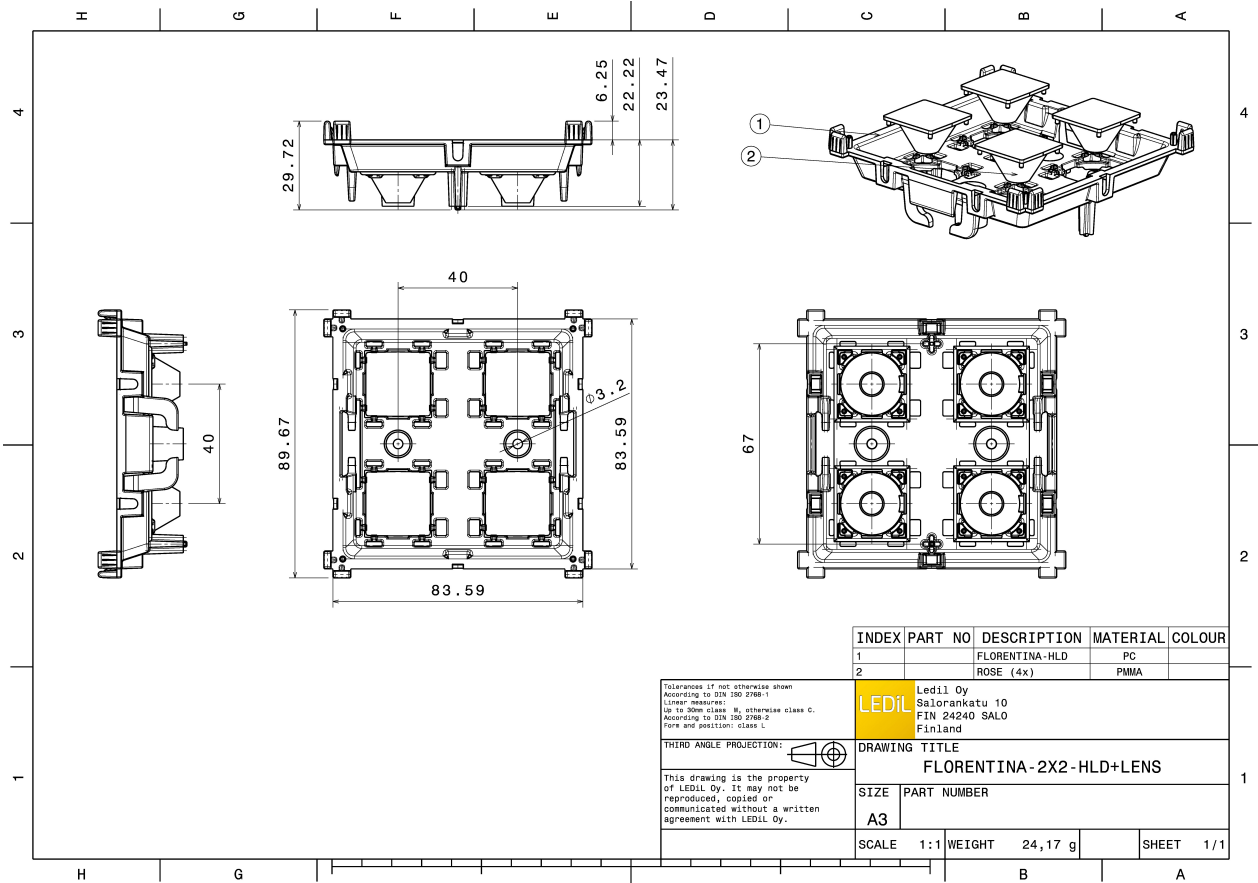
TECHNICAL SPECIFICATIONS:

Dimensions	95.57x95.57 mm
Height	22.2 mm
Fastening	pin, screw
Colour	black
Box size	476 x 273 x 292 mm
Box weight	4 kg
Quantity in Box	88 pcs
ROHS compliant	yes ⓘ



MATERIAL SPECIFICATIONS:

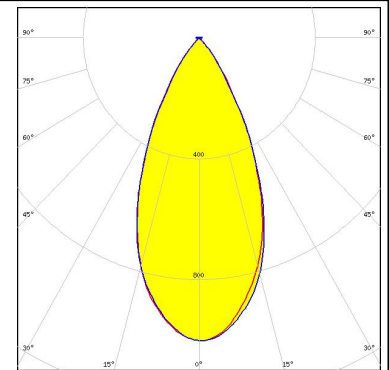
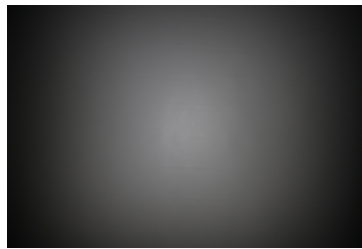
Component	Type	Material	Colour
ROSE-C-C-W-V4	Lens	PC	clear
FLORENTINA-2X2-HLD	Holder	PC	black



PHOTOMETRIC DATA (MEASURED):



LED XHP35 HD
FWHM 49.0°
Efficiency 70 %
Peak intensity 1.000 cd/lm
Required components:
C14734_FLORENTINA-2X2-SHD



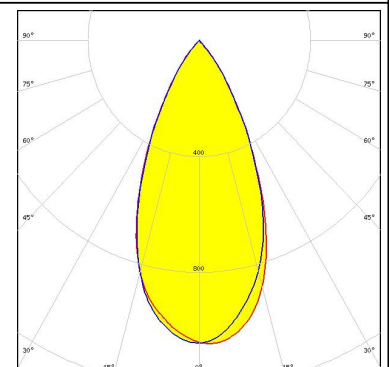
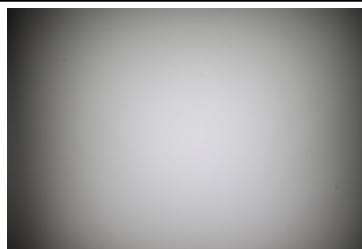
LED XHP35 HD
FWHM 49.0°
Efficiency 70 %
Peak intensity 1.000 cd/lm
Required components:
C15196_FLORENTINA-2X2-SHD-OPEN



LED XP-L
FWHM 49.0°
Efficiency 70 %
Peak intensity 1.000 cd/lm
Required components:
C14960_FLORENTINA-2X2-SHD-WHT



LED XP-L
FWHM 49.0°
Efficiency 70 %
Peak intensity 1.000 cd/lm
Required components:
C14734_FLORENTINA-2X2-SHD



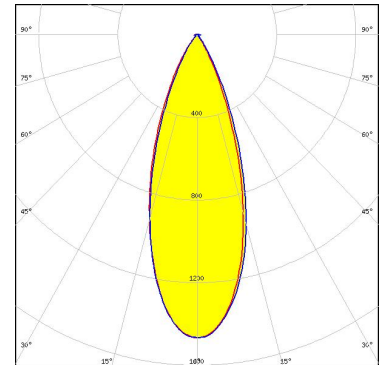
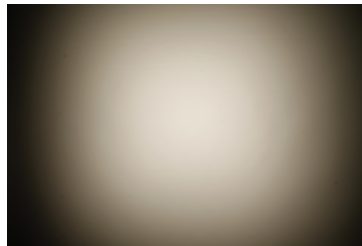
PHOTOMETRIC DATA (MEASURED):



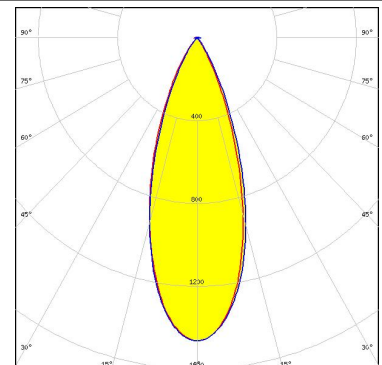
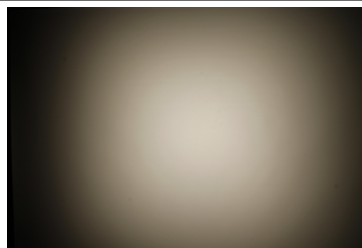
LED XP-L
 FWHM 49.0°
 Efficiency 70 %
 Peak intensity 1.000 cd/lm
 Required components:
 C15196_FLORENTINA-2X2-SHD-OPEN



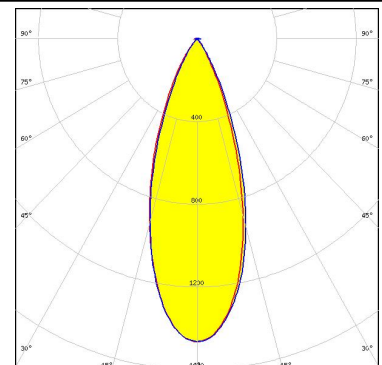
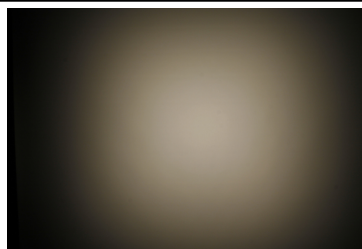
LED LUXEON MZ
 FWHM 37.0°
 Efficiency 69 %
 Peak intensity 1.500 cd/lm
 Required components:
 C14960_FLORENTINA-2X2-SHD-WHT



LED LUXEON MZ
 FWHM 36.0°
 Efficiency 66 %
 Peak intensity 1.500 cd/lm
 Required components:
 C14734_FLORENTINA-2X2-SHD



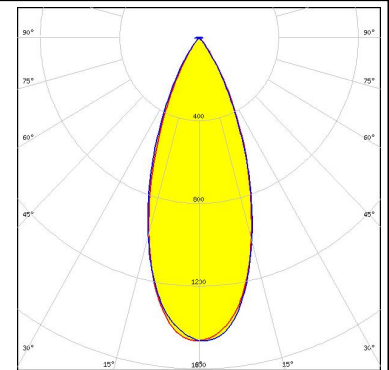
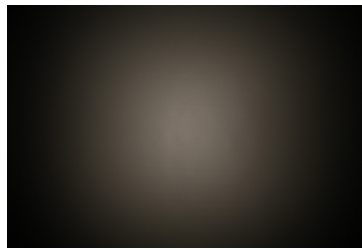
LED LUXEON MZ
 FWHM 36.0°
 Efficiency 66 %
 Peak intensity 1.500 cd/lm
 Required components:
 C15196_FLORENTINA-2X2-SHD-OPEN



PHOTOMETRIC DATA (MEASURED):



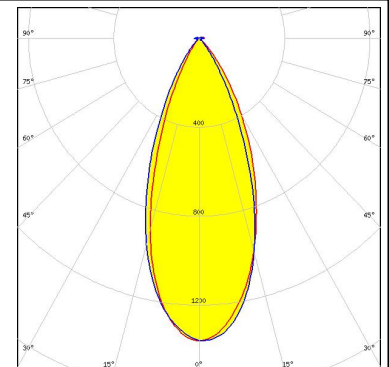
LED LUXEON TX
FWHM 41.0°
Efficiency 76 %
Peak intensity 1.500 cd/lm
Required components:
C14734_FLORENTINA-2X2-SHD



LED LUXEON TX
FWHM 41.0°
Efficiency 76 %
Peak intensity 1.500 cd/lm
Required components:
C15196_FLORENTINA-2X2-SHD-OPEN



LED NVSxx19B/NVSxx19C
FWHM 42.0°
Efficiency 80 %
Peak intensity 1.400 cd/lm
Required components:
C14734_FLORENTINA-2X2-SHD

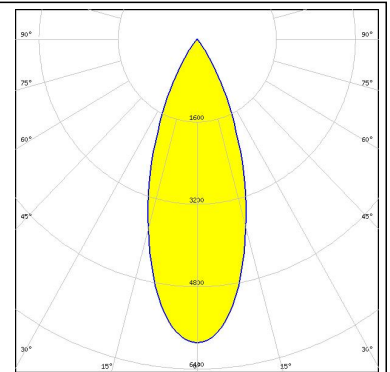
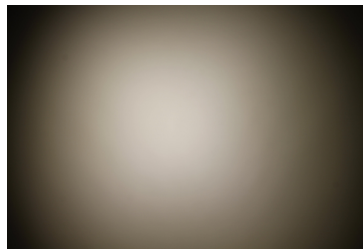


LED NVSxx19B/NVSxx19C
FWHM 42.0°
Efficiency 80 %
Peak intensity 1.400 cd/lm
Required components:
C15196_FLORENTINA-2X2-SHD-OPEN

PHOTOMETRIC DATA (MEASURED):

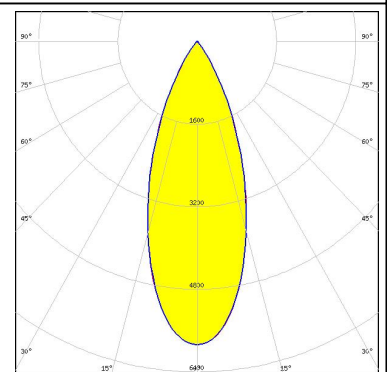
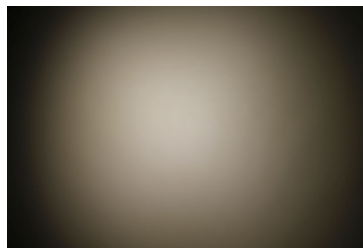
OSRAM
Opto Semiconductors

LED Oslon Square Gen3
FWHM 35.0°
Efficiency 69 %
Peak intensity 1.600 cd/lm
Required components:
C14734_FLORENTINA-2X2-SHD



OSRAM
Opto Semiconductors

LED Oslon Square Gen3
FWHM 35.0°
Efficiency 72 %
Peak intensity 1.600 cd/lm
Required components:
C14960_FLORENTINA-2X2-SHD-WHT



GENERAL INFORMATION:

NOTE: The typical beam angle will be changed by different color, chip size and chip position tolerance. The typical total beam angle is the full angle measured where the luminous intensity is half of the peak value.

MATERIALS:

As part of our continuous research and improvement processes, and to ensure the best possible quality and availability of our products, LEDiL reserves the right to change material grades without notice.

PRODUCT DATA USER AGREEMENT AND DISCLAIMER:

The measured data in the provided downloadable LEDiL Product Datasheets and Mechanical 2D-Drawings is rounded and provided as reference for planning. LEDiL Oy's optical specifications have been verified by conducting performance testing of the products in accordance with the company's quality system. The reported data are averaged results of multiple measurements with typical variation. LEDiL Oy reserves the right to without prior notification make changes and improvements to its products.

LEDiL Oy assumes neither warranty, nor guarantee nor any other liability of any kind for the contents and correctness of the provided data. The provided data has been generated with highest diligence but the provided data may in reality not represent the complete possible variation range of all intrinsic parameters. Therefore, in certain cases a deviation from the provided data could occur.

LEDiL Oy reserves the right to undertake technical changes of its products without further notification which could lead to changes in the provided data. LEDiL Oy assumes no liability of any kind for the possible deviation from any provided data or any other damage resulting from the usage of the provided data.

The user agrees to this disclaimer and user agreement with the download or usage of the provided files.

LEDiL Oy

Joensuunkatu 13
FI-24240 SALO
Finland

LEDiL Inc.

228 West Page Street
Suite D
Sycamore IL 60178
USA

Local sales and technical support

www.ledil.com/where_to_buy

Shipping locations

Salo, Finland
Hong Kong, China

Distribution Partners

www.ledil.com/where_to_buy