

Metal Switch Short Stroke Ring Illuminated



See below:
[Approvals and Compliances](#)

Description

- Momentary switch available in version ring illumination and Lettering Assembly by mounting with nut
- Flexible wire connection

Unique Selling Proposition

- Flat front design metal made
- Switching voltage 48 VDC, switching current 125 mA
- With multicolor ring illumination

Characteristics

- Housing material: aluminum or stainless steel, actuator material types: zinc die-cast or stainless steel
- for use in harsh environments (see technical data)

Weblinks

[html-datasheet](#), [General Product Information](#), [CAD-Drawings](#), [Product News](#), [Detailed request for product](#), [Microsite](#)

Technical Data

Electrical Data

| | |
|----------------------------------|--|
| Supply Voltage | LED operating data are listed in separate table |
| Supply Voltage Ring Illumination | 24 VDC, Multicolor: 5 - 28 VDC |
| Switching Voltage | min. 4 VDC , max. 48 VDC |
| Switching Current | max. 125 mA |
| Rated Switching Capacity | 1.2 W |
| Lifetime | 1 million actuations at Rated Switching Capacity |
| Contact Resistance | < 50mΩ, < 150 mΩ |
| Insulation Resistance | > 100 MΩ |
| Duration of Bounce | < 5 ms |

Mechanical Data

| | |
|------------------|----------------------|
| Actuating Force | 3.7 N |
| Actuating Travel | 0.4 mm, |
| Lifetime | 1 million actuations |
| Shock Protection | IK 05 , |

Climatical Data

| | |
|--|-----------------------------------|
| Operating Temperature | -20 to +60 °C |
| Storage Temperature | -20 to +60 °C |
| Protection Class | IP 65 |
| Switching Unit | IP 65 |
| Salt Spray Test (acc. to DIN 50021-SS) | 24 h / 48 h / 96 h Residence Time |

Material

| | |
|---------------------|--------------------------------|
| Contact Material | Ag |
| Housings | Aluminium anodized |
| Finger Guide | Zinc Die Casting Nickel Plated |
| Actuator unlettered | Zinc Die Casting Nickel Plated |
| Actuator lettered | Stainless Steel |

Approvals and Compliances

Detailed information on product approvals, code requirements, usage instructions and detailed test conditions can be looked up in [Details about Approvals](#)

Application standards

Application standards where the product can be used

| Organization | Design | Standard | Description |
|--------------|--------------------------------|--------------|---|
| | Designed for applications acc. | IEC/UL 60950 | IEC 60950-1 includes the basic requirements for the safety of information technology equipment. |

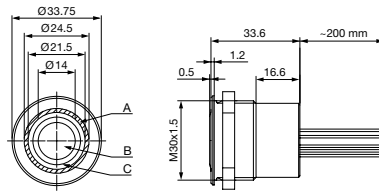
Compliances

The product complies with following Guide Lines

| Identification | Details | Initiator | Description |
|----------------|---------|-------------|---|
| | RoHS | SCHURTER AG | EU Directive RoHS 2011/65/EU |
| | REACH | SCHURTER AG | On 1 June 2007, Regulation (EC) No 1907/2006 on the Registration, Evaluation, Authorization and Restriction of Chemicals 1 (abbreviated as "REACH") entered into force. |

Dimension [mm]

MCS 30 RI



Legend:

A = Illumination Area

B = Actuating Area

C = Finger Guide

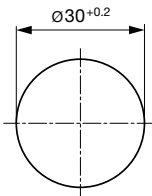
Lettering:

- optional with/without lettering

- location of the wires to the location of the lettering is not defined

Dimension

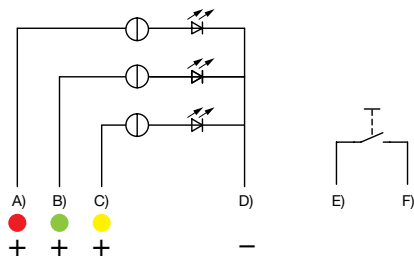
Front Panel Drilling MCS 30 RI



Drilling diagram

Diagrams

MCS 30 RI RGY

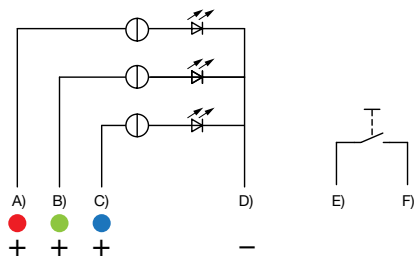


- A) Cable (color of the LED), Supply voltage
- B) Cable (color of the LED), Supply voltage
- C) Cable (color of the LED), Supply voltage
- D) Cable (black), Common mass
- E) Cable (white), Input and output MCS switch
- F) Cable (white), Input and output MCS switch

Illumination options for RGY

| Lighting type | Active terminal A) ● | Active terminal B) ● | Active terminal C) ● | Resulting Color |
|------------------------|---|---|--|--|
| Multicolor Singlecolor | A | | | Red ● |
| Multicolor Singlecolor | | B | | Green ● |
| Multicolor Singlecolor | | | C | Yellow ● |

MCS 30 RI Multicolor



- A) Cable (color of the LED), Supply voltage
- B) Cable (color of the LED), Supply voltage
- C) Cable (color of the LED), Supply voltage
- D) Cable (black), Common mass
- E) Cable (white), Input and output MCS switch
- F) Cable (white), Input and output MCS switch

Illumination options for Multicolor

| Lighting type | Active terminal A) ● | Active terminal B) ● | Active terminal C) ● | Resulting Color |
|---------------------------|---|---|--|--|
| Multicolor Singlecolor | A | | | Red ● |
| Multicolor Singlecolor | | B | | Green ● |
| Multicolor Singlecolor | | | C | Blue ● |
| Multicolor RGB Additive 2 | A | B | | Yellow ● |
| Multicolor RGB Additive 2 | A | | C | Magenta ● |
| Multicolor RGB Additive 2 | | B | C | Cyan ● |
| Multicolor RGB Additive 3 | A | B | C | White ○ |

Lettering





The last three digits in the order number define the lettering:

| | |
|---------|----------------------|
| 000 | No Lettering |
| 001-074 | Standard Lettering |
| 101- | Customized Lettering |

Lettering Colour of Laser Lettering

| Material | Lettering Colour | |
|-----------------|------------------|----------------|
| Stainless Steel | black | Filled letters |

Order Index Lettering

| Laser Marking | | | |
|----------------|----------------|---------------------|---|
| 001 = A | 021 = U | 041 = ÷ | 061 = EIN |
| 002 = B | 022 = V | 042 = * | 062 = AUS |
| 003 = C | 023 = W | 043 = = | 063 = AUF |
| 004 = D | 024 = X | 044 = # | 064 = AB |
| 005 = E | 025 = Y | 045 = ↔ | 065 = ON |
| 006 = F | 026 = Z | 046 = † | 066 = OFF |
| 007 = G | 027 = 0 | 047 = → | 067 = UP |
| 008 = H | 028 = 1 | 048 = ← | 068 = DOWN |
| 009 = I | 029 = 2 | 049 = ↓ | 069 = HIGH |
| 010 = J | 030 = 3 | 050 = ↑ | 070 = LOW |
| 011 = K | 031 = 4 | 051 = % | 071 = ON/OFF |
| 012 = L | 032 = 5 | 052 = √ | 072 = START |
| 013 = M | 033 = 6 | 053 = CTRL | 073 = RESET |
| 014 = N | 034 = 7 | 054 = RETURN | 074 =  |
| 015 = O | 035 = 8 | 055 = SHIFT | 075 =  |
| 016 = P | 036 = 9 | 056 = LOCK | 076 =  |
| 017 = Q | 037 = + | 057 = STOP | 077 =  |
| 018 = R | 038 = - | 058 = ENTER | |
| 019 = S | 039 = . | 059 = BACK | |
| 020 = T | 040 = x | 060 = LINE | |

All Variants

| Housing Material | Finger guide Material | Actuator Material | Lettering | Illumination, LED | Config. Code | Bestellnummer |
|------------------|-----------------------|-------------------|------------------------|--|--------------|---------------------------|
| Aluminum | Zinc Diecasting | Zinc Diecasting | lettering not possible | Ring Illumination, red, 24 VDC | MCS 30 RI | 1241.6400 |
| Aluminum | Zinc Diecasting | Zinc Diecasting | lettering not possible | Ring Illumination, green, 24 VDC | MCS 30 RI | 1241.6401 |
| Aluminum | Zinc Diecasting | Zinc Diecasting | lettering not possible | Ring Illumination, yellow, 24 VDC | MCS 30 RI | 1241.6402 |
| Aluminum | Zinc Diecasting | Zinc Diecasting | lettering not possible | Ring Illumination, red / green, 24 VDC | MCS 30 RI | 1241.6403 |
| Aluminum | Zinc Diecasting | Zinc Diecasting | lettering not possible | Ring Illumination, blue, 24 VDC | MCS 30 RI | 1241.6404 |
| Aluminum | Zinc Diecasting | Stainless Steel | lettering possible | Ring Illumination, red, 24 VDC | MCS 30 RI | 1241.6405 |
| Aluminum | Zinc Diecasting | Stainless Steel | lettering possible | Ring Illumination, green, 24 VDC | MCS 30 RI | 1241.6406 |
| Aluminum | Zinc Diecasting | Stainless Steel | lettering possible | Ring Illumination, yellow, 24 VDC | MCS 30 RI | 1241.6407 |
| Aluminum | Zinc Diecasting | Stainless Steel | lettering possible | Ring Illumination, red / green, 24 VDC | MCS 30 RI | 1241.6408 |

| Housing Material | Finger guide Material | Actuator Material | Lettering | Illumination, LED | Config. Code | Bestellnummer |
|------------------|-----------------------|-------------------|------------------------|---|--------------|---------------|
| Aluminum | Zinc Diecasting | Zinc Diecasting | lettering not possible | Ring Illumination, white, 24 VDC | MCS 30 RI | 1241.6437 |
| Aluminum | Zinc Diecasting | Zinc Diecasting | lettering not possible | Ring Illumination, multicolor, 5 - 28 VDC | MCS 30 RI | 1241.6454 |
| Aluminum | Zinc Diecasting | Zinc Diecasting | lettering not possible | Ring Illumination, RGY, 5 - 28 VDC | MCS 30 RI | 1241.6455 |
| Stainless Steel | Stainless Steel | Stainless Steel | lettering possible | Ring Illumination, multicolor, 5 - 28 VDC | MCS 30 RI | 1241.6456 |

The MCS 30 switch versions "Lettering possible" can be lettered according to the lettering indices.

The MOQ for standard laser lettering on standard variants is 10 pieces.

The contact material is silver

Terminal: wire 200 mm

Nut with gasket are enclosed in the box.

Most Popular.

Availability for all products can be searched real-time: <https://www.schurter.com/en/Stock-Check/Stock-Check-SCHURTER>

Packaging unit 20 in cardboard box packed in air cushion bag



- Actuating elements in ESD safe packaging
- Screw nuts and sealing rings in a bag (enclosed in the box)

Accessories

Description



Power Supply

Power Supply IP42 for LED- and Illumination applications indoor 90~264 VAC => 24 VDC 0.34 A 8 W