

PART NAME: KNOB      SCALE: 1:1      DATE: 7/20/45      DR. BY HAC

DAVIES MOLDING COMPANY  
CAROL STREAM, ILLINOIS 60188

P/N 1450-A

THIS DRAWING IS THE PROPERTY OF DAVIES MOLDING COMPANY, IS SUBMITTED SOLELY AS A DESIGN OR ENGINEERING PROJECT. WE ACCEPT NO RESPONSIBILITY WHATSOEVER FOR THE PRACTICAL APPLICATION OF THE PIECES MADE TO THIS DESIGN.

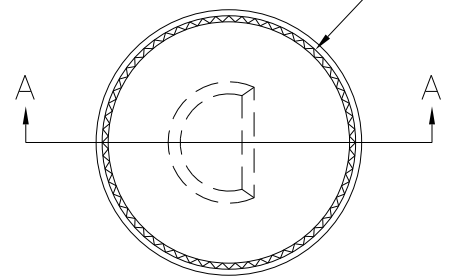
BASE PART 1450-01

SPRING 11125A

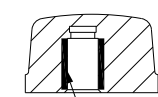
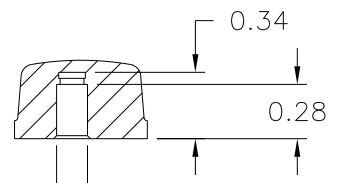
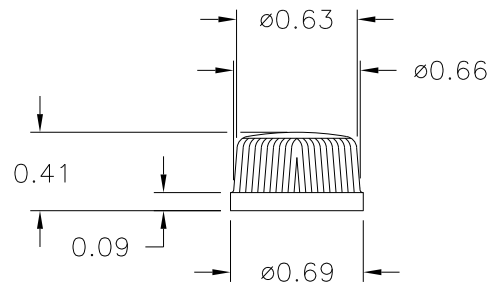
SCALE 2:1

KNURL 60 SEPRATION  
EQUALLY SPACED AT 6° APART

©



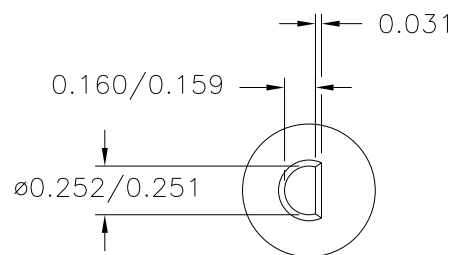
SECTION A-A



"D" SHAPED ø0.250  
SHAFT FLATTED TO 0.156

(A) (B)

"D" SHAPED SPRING 11125A  
TO FIT STANDARD ø0.250  
SHAFT FLATTED TO 0.156



MATERIAL: G.P. PHENOLIC (B11)  
COLOR: BLACK

	UPDATED/HAD TOOLBOX	ST	7/24/2000
TOLERANCES: UNLESS OTHERWISE SPECIFIED	DO NOT SCALE DRAWING	C	SET-UP REVISED, WAS M-1450, PIN WAS 1450-4, SPRING WAS 10376
DECIMALS: X.XXX ± .005 X.XX ± .015	MM: X.XX ± 0.15MM X.X ± 0.4MM	B	WAS 10182
FRACTIONS ± 1/64	ANG. ± 1°	A	WAS 10049
		CHANGES	
		HD	8/21/81
		LSP	4/3/59
		JVA	12/20/47