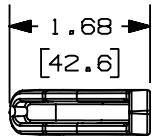
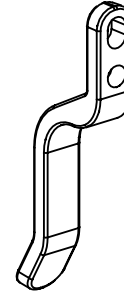
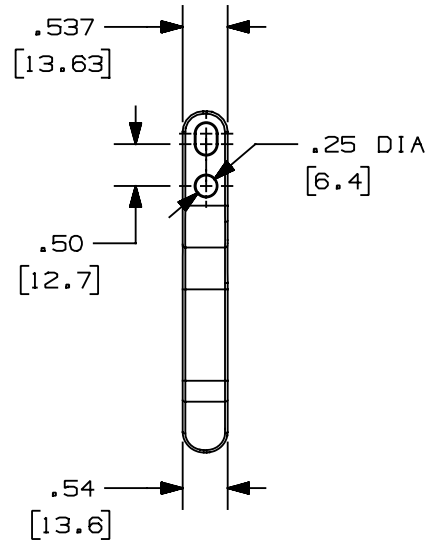
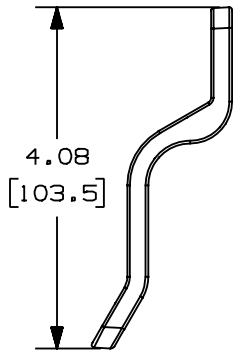


THIS COPY IS PROVIDED ON A RESTRICTED BASIS AND IS NOT TO BE USED IN ANY WAY DETRIMENTAL TO THE INTERESTS OF PANDUIT CORP.



PANDUIT P/N	WEIGHT
WMSRC1**	.40 LB/10 PCS (181.8 G/10 PCS)

- NOTES:
- ** 1. SEE CURRENT CATALOG FOR ADDITIONAL PART SUFFIXES TO INDICATE COLOR AND OR PACKAGE QUANTITY.
 - 2. TO BE USED WITH WMPH1. CAN BE MOUNTED ON LEFT OR RIGHT FRONT SIDE OF WMPH1.
 - 3. (4) #12-24 X 1/2" UNC ROUND HEAD SCREWS ARE INCLUDED WITH CLIP.
 - 4. ALL DIMENSIONS IN PARENTHESES ARE IN METRIC.



CAD FILENAME/LAYERS		M35319BG_DC_00A.PRT	
<h1>PANDUIT</h1> CORP. TINLEY PARK, ILLINOIS WIRE MGMT. STRAIN RELIEF CLIP (WMSRC1**)			
CUSTOMER DRAWING			
UNLESS OTHERWISE SPECIFIED, DIMENSIONAL TOLERANCES ARE: (.X) ± (.XXX) ± .010 (.3) (.XX) ± .03 (.8) ANGLES ±		UNLESS OTHERWISE SPECIFIED, ALL DIMENSIONS ARE GIVEN IN INCHES, THIRD ANGLE PROJECTION.	
DRAWN BY RCA	MAT'L: NYLON	SCALE NONE	
DATE 7-29-97	CHECKED BY	DRAWING NO. 35319-02	DWG A SIZE

REV	DATE	BY	CHK	DESCRIPTION	ECN	CHK	CUST	SUP
R	7-29-97	RCA		RELEASED TO PRODUCTION	35319-02			