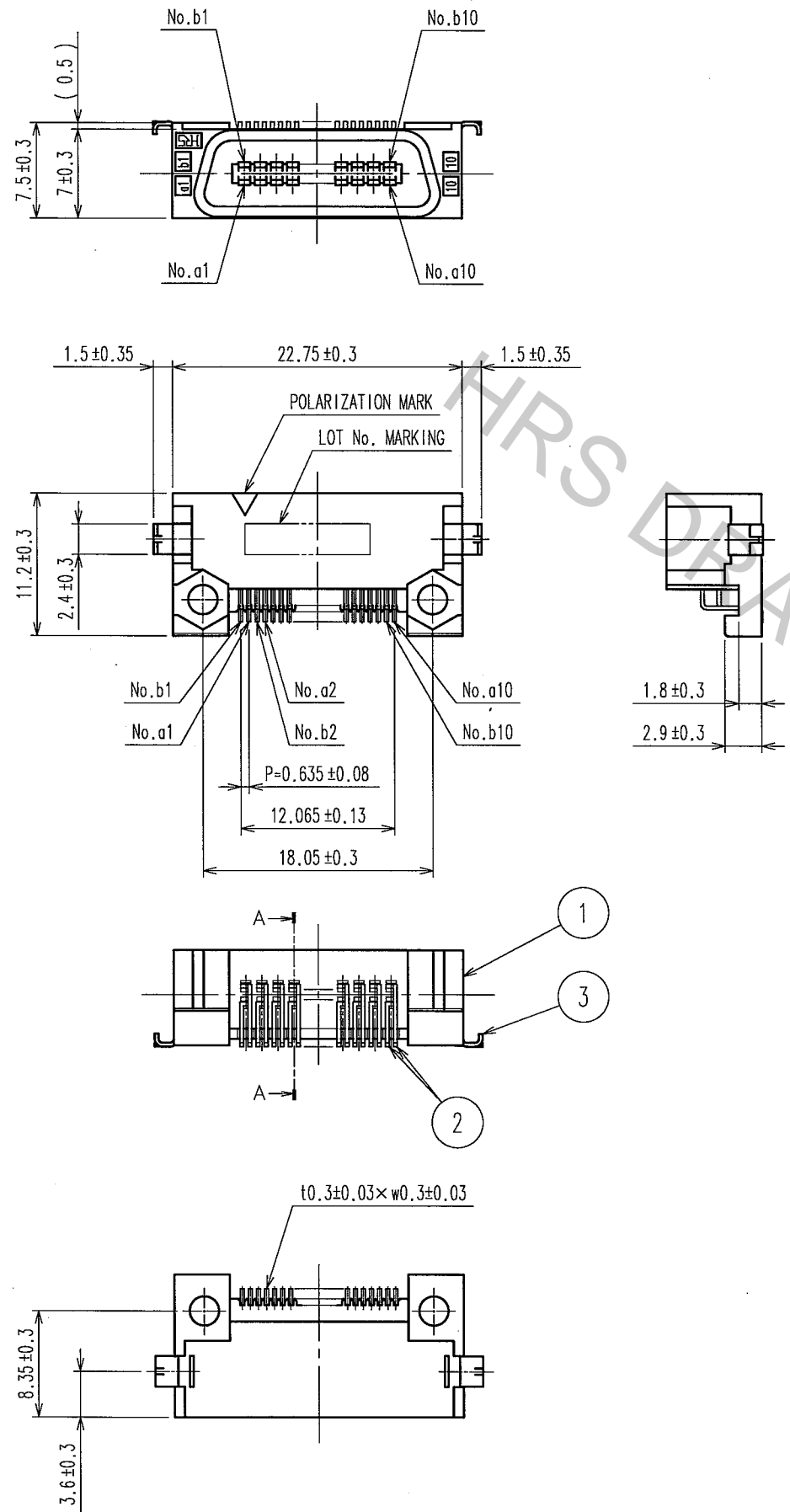
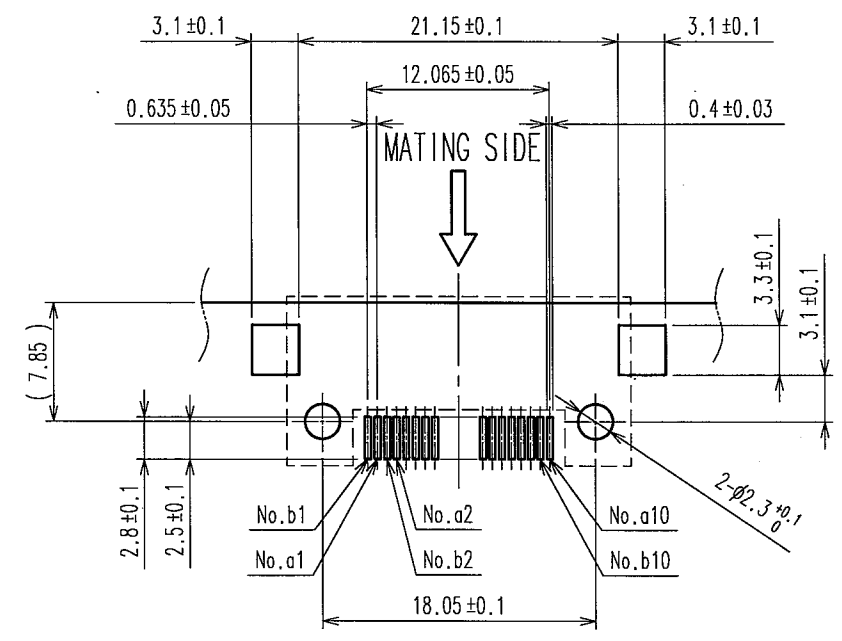


Apr.1.2017 Copyright 2017 HIROSE ELECTRIC CO., LTD. All Rights Reserved.

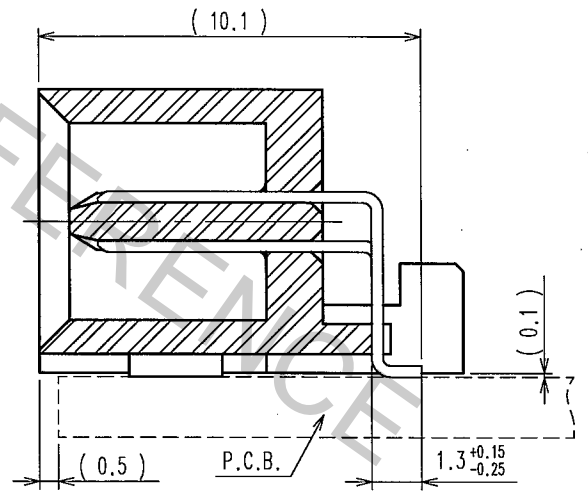


COUNT	DESCRIPTION OF REVISIONS	BY	CHKD	DATE	COUNT	DESCRIPTION OF REVISIONS	BY	CHKD	DATE
△				..	△				..
△				..	△				..
△				..	△				..

RECOMMENDED LAND PATTERN DIMENSION OF PCB (MOUNTING SIDE)
t = 1.6



A-A (5:1)



TO
PCK

NOTE 1 LEAD CO-PLANARITY SHALL BE 0.1 MAX.
2 THE DIMENSIONS IN PARENTHESES ARE FOR REFERENCE.

3	BRASS	TIN-PLATING	2	BRASS	CONTACT AREA:GOLD 0.2μ m min.
1	PPS	LIGHT BROWN (UL94V-0)			LEAD AREA:TIN-PLATING 2μ m min.
					UNDER PLATING:NICKEL 1μ m min.
NO.	MATERIAL	FINISH, REMARKS	NO.	MATERIAL	FINISH, REMARKS
CODE NO. (OLD) CL		DRAWN A.SUZUKAWA 06.03.07	DESIGNED H.Nakamura 06.03.13	CHECKED K.Ogawa 06.03.13	APPROVED H.Okawa 06.03.13
DRAWING NO. EDC3-150358-21		PART NO. FX2A-20P-0.635SH(71)		CODE NO. CL572-2771-6-71	
SCALE 2:1		UNITS mm		1/1	
HRS		HIROSE ELECTRIC CO., LTD			