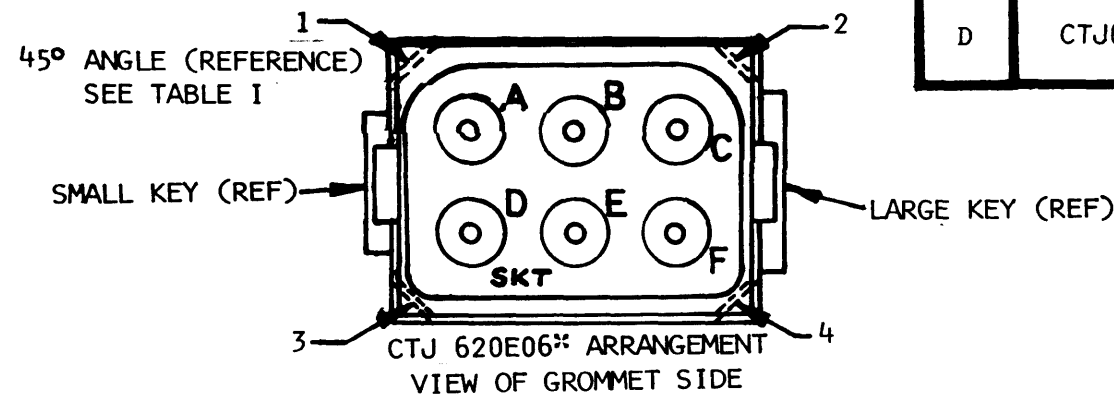
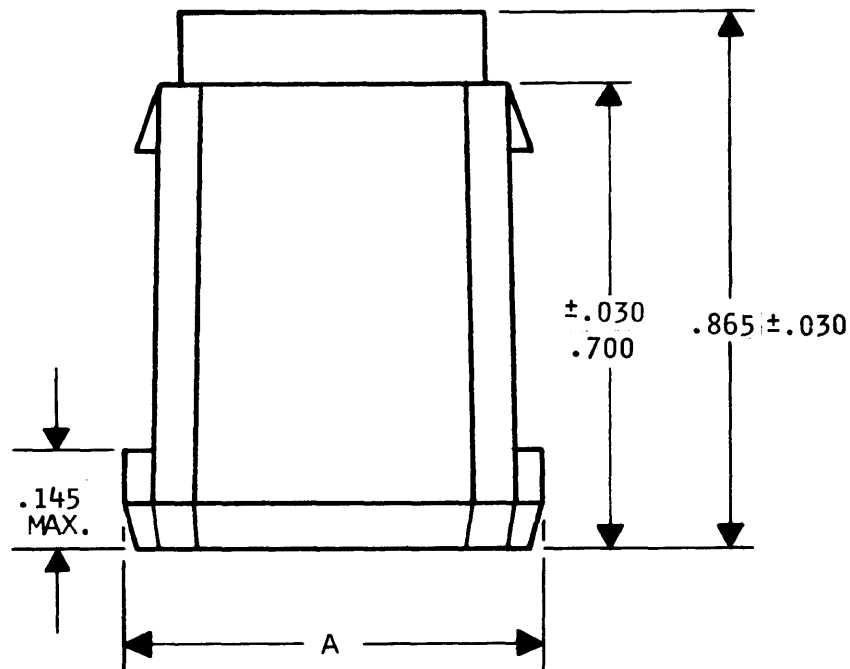
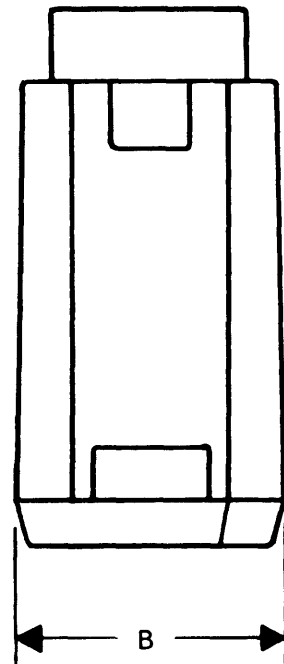


CTJ 620E12** ARRANGEMENT
GROMMET IDENTIFICATION



CTJ 620E06** ARRANGEMENT
VIEW OF GROMMET SIDE



D CTJ620E****

REVISIONS			
SYM	DESCRIPTION	DATE	APPROVED
N/C	NEW RELEASE PER E.O. 82018	1-24-76	
A	REVISED & REDRAWN PER E.O. 81099	2-4-76	JDM
B	REVISED PER E.O. 82118	5/11/76	Rev. H.
C	REVISED PER E.O. 88553	3-1-83	J.H.
D	REVISED PER E.O. A8935.	12-20-90	P

9. CAVITY IDENTIFICATION IS SHOWN FOR REFERENCE ONLY AND MAY NOT BE IN TRUE POSITION.
8. MODULE UNMATING TOOL, PART NUMBER CTJ-R00, TO BE ORDERED SEPARATELY.
7. CONTACT INSERTION/REMOVAL TOOL, DEUTSCH PART NUMBER M15570-20 (MS PART NUMBER M83723-31-20).
6. SOCKET CONTACTS, DEUTSCH PART NUMBER CTS-S20/20 (MS PART NUMBER M39029/22-192).
5. MODULES MEET APPLICABLE PERFORMANCE REQUIREMENTS OF MIL-C-83723, REV B, EXCEPT AS FOLLOWS:
CONTACT ENGAGING & SEPARATION FORCES (INITIAL):
18 OZ MAX/.7 OZ. MIN.

#20 SOCKET CONTACT RETENTION FORCES: 15 LBS. MIN. (AXIAL)
USABLE WIRE SIZE: AWG 20 THRU 24.
GROMMET WILL SEAL ON SMOOTH INSULATION FROM .040 TO .083" O.D.
MODULE MATING FORCE: 6 CONTACT - 19 LBS. MAX., 12 CONTACT
26 LBS. MAX.

4. MATERIAL: HOUSING: PLASTIC, GROMMET: SILICONE ELASTOMER, CONTACTS: COPPER ALLOY.
3. CONTACT CENTER TO CENTER SPACING .130
2. DIMENSIONS ARE SPECIFIED IN INCHES.
1. MATES WITH MODULE, RECEPTACLE, DEUTSCH PART NUMBER CTJ920E****.

NOTE:

KEYING POSITION	45°±1° ANGLE LOCATIONS
N	1 & 2
1	3 & 4
2	1 & 3
3	2 & 4

PART NUMBER	A±.010	B±.010	NO. OF CONTACTS
CTJ620E06**	.530	.360	6
CTJ620E12**	.652	.510	12

EXPLANATION OF PART NUMBER: CTJ 6 20 E ****

BASIC IDENTIFIER _____
PLUG MODULE _____
CONTACT SIZE (20) _____
ENVIRONMENTAL _____
NUMBER OF CONTACTS _____
06 = 6
12 = 12

** KEYING POSITION. PROVIDED WITH 2 45° CORNERS (REF DASHED LINES) IN PLACE OF 90° CORNERS, AT INDICATED LOCATION ON GROMMET VIEW AND TABLE I.
N = STANDARD

(CONSULT FACTORY) 1 THRU 3, ALTERNATE.

SIGNATURE & DATE		MODULE ASSEMBLY, PLUG COMPLETE TERMINATION JUNCTION 6 & 12 CONTACTS ENVELOPE	CP	MATL CODE	
DR	<i>John Platt 2-4-76</i>		The Deutsch Company ELECTRONIC COMPONENTS DIVISION Municipal Airport Benning, California		
CHK	<i>Kenyon Harington 2-4-76</i>		B	CTJ620E****	
PE	<i>J. MACDONALD 2-4-76</i>			DWG SIZE	CODE 11139
APPD				SHEET 1 OF 1	
SCALE	NONE	WT			