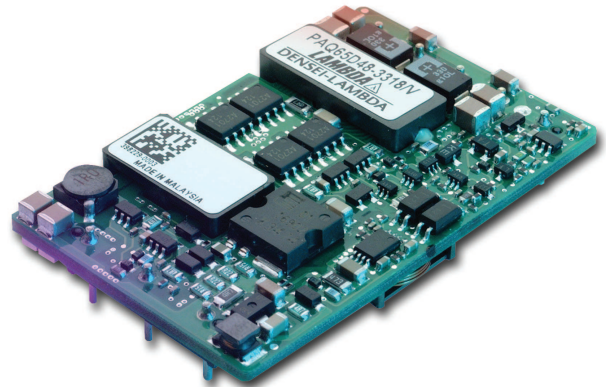


High Efficiency Dual Output Quarter Brick DC-DC Converters

Features

- ◆ Industry Standard Package
- ◆ Low voltage outputs to 1.8V
- ◆ Output Currents up to 17A
- ◆ Designed for telecom standards
- ◆ Output voltage adjustment - independent or tracking (/C)
- ◆ Remote On / Off
- ◆ High Efficiency
- ◆ ASIC Design
- ◆ No minimum load



Key Market Segments & Applications

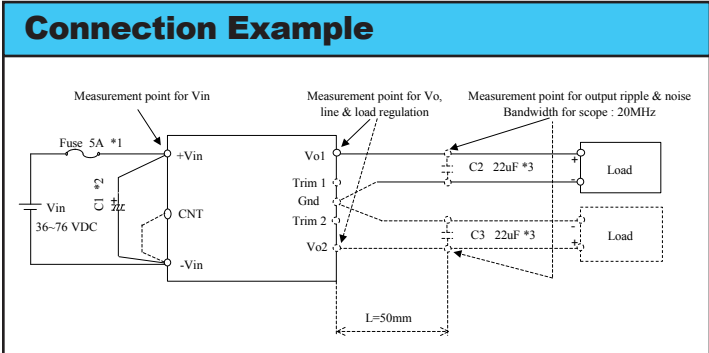
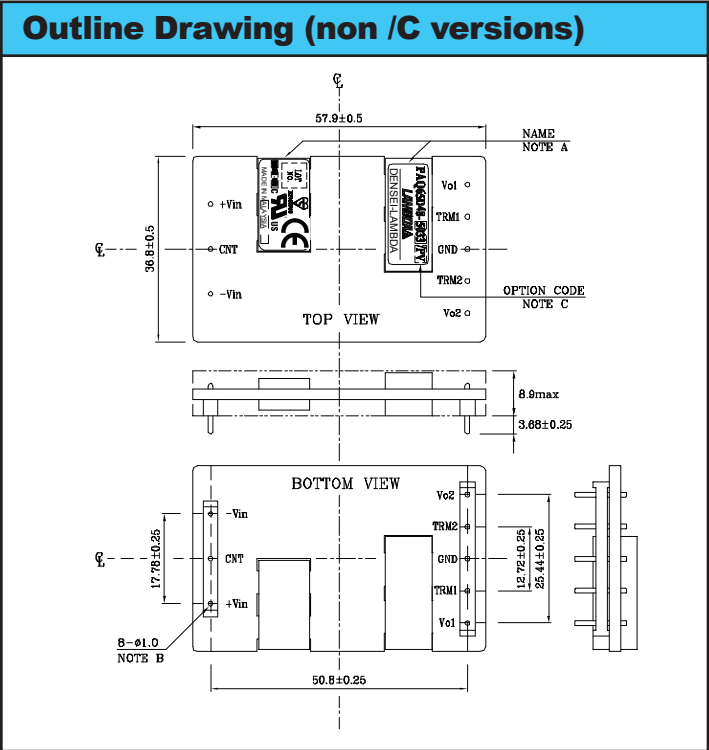
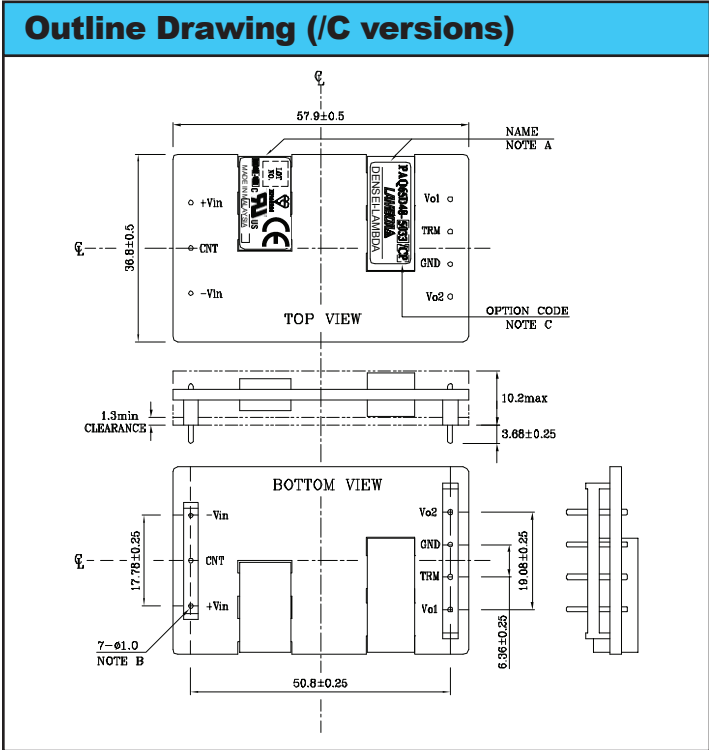
Specifications									
Model		PAQ65D482518		PAQ65D483318		PAQ65D483325		PAQ65D485033	
		V01	V02	V01	V02	V01	V02	V01	V02
Nominal Output Voltage	VDC	2.5	1.8	3.3	1.8	3.3	2.5	5.0	3.3
Output Current (Max)	A	15	17	15	17	15	17	13	16
Output Current (Max total)	A	Io1 + Io2 = 18							
Max Output Power	W	37.5		49.5		49.5		65.0	
Efficiency (Typ)	%	86.0		86.0		87.0		90.0	
Input Voltage range	VDC	36 - 76V							
Input Current (typ)	A	0.82		0.97		1.10		1.36	
Output Voltage Accuracy	%	±2							
Output Voltage Trim Range (1)	VDC	2.25-2.75	1.62-1.98	2.97-3.63	1.62-1.98	2.97-3.63	2.25-2.75	4.50-5.50	2.97-3.63
Max Ripple & Noise	mV	75	75	100	75	100	75	100	100
Max Line Regulation	mV	± 6.6							
Max Load Regulation	mV	± 16.5							
Overcurrent Protection (OCP) (2)	%	105 - 160% (See options table for either manual or automatic reset)							
Overvoltage Protection (OVP)	%	120 - 140% (See options table for either manual or automatic reset)							
Remote On / Off	%	Low = ON, Open = OFF /P option; Low = OFF, Open = ON (See options)							
Operating Temperature	°C	-40°C to +85°C							
Operating & Storage Humidity	-	5 - 95% RH, Non condensing							
Storage Temperature	°C	-40°C to +100°C							
Cooling	-	Convection, or forced air							
I/O Isolation Voltage	-	Input to Output 1.5k VDC for 1 min.							
Vibration (non operating)	-	10 - 55Hz (1 minute), amplitude 0.825mm (49m/s ² max), X, Y, Z 1 hour each							
Shock	m/s ²	196.1 m/s ²							
Safety Agency Approvals	-	UL1950, CSA950, EN60950, & CE							
Weight (Typ)	g	40							
Size (WxHxD)	mm	36.8 x 8.9 x 57.9 (36.8 x 10.2 x 57.9 /C version)							
Warranty	yr	2 Years							

Note: See Installation Manual for full details, test methods of parameters and application notes.

1. Specify /C option for one trim pin - tracking outputs, leave blank for individual adjustment

2. Io1 + Io2

Not recommended for new designs



Options

Suffix	Trim Pin	On/Off Logic	OVP /OCP
Blank	Independent	Negative, short = ON	Manual Reset
/ P	-	Positive, Open = ON	-
/ V	-	-	Auto-restart
/ C	Tracking	-	-

/V, /PV, /CV, /CPV are US Standard US stock items
 Note suffix letter order : /C followed by P followed by V

Other DC-DC Products

X	10, 15, & 20W 24V & 48VDC input DC-DC converters
PAF	500 & 600W Full brick DC-DC
PAH	50W to 200W Half brick DC-DC, single & dual outputs
PAQ	Up to 100W Quarter brick DC-DC, single outputs
SX	20W surface mount 24V & 48VDC-DC

For Additional Information, please visit us.tdk-lambda.com/lp/products/paq-series.htm



Not recommended for new designs