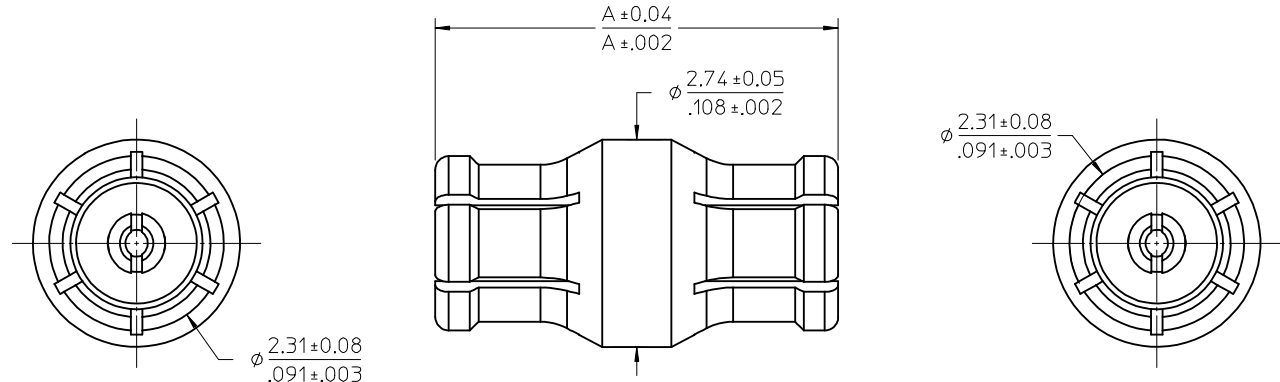
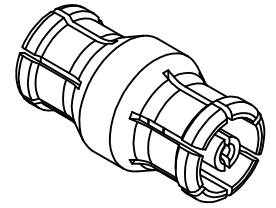


MATERIALS AND FINISHES:

BODY: BERYLLIUM COPPER
 PLATED GOLD PER MIL-G-45204 TYPE II, GRADE C, CLASS 1 (50 μ-in MIN)
 OVER NICKEL 50 μ-in MIN

INSULATOR: PTFE

CONTACT: BERYLLIUM COPPER
 PLATED GOLD PER MIL-G-45204 TYPE II, GRADE C, CLASS 1 (50 μ-in MIN)
 OVER NICKEL 50 μ-in MIN



73300-0232	.468 / 11.89	14.59
73300-0231	.186 / 4.73	7.43
73300-0230	.906 / 23.00	25.7
73300-0229	.524 / 13.30	16.0
73300-0228	.197 / 5.00	7.7
73300-0227	.334 / 8.48	11.2
73300-0226	.750 / 19.05	21.8
73300-0225	.500 / 12.70	15.4
73300-0224	.349 / 8.86	11.6
73300-0223	.327 / 8.31	11.0
73300-0222	.278 / 7.06	9.8
73300-0221	.260 / 6.60	9.3
73300-0220	.210 / 5.33	8.0
PART NO.	IN / MM	TYPICAL
	DIM A	PCB GAP (MM)

BOARD GAP USING 73300-0440 AND EQUIVALENT P/N SERIES

VSWR (TYP):
 1.15 TO 18 GHz
 1.25 TO 40 GHz
 1.35 TO 65 GHz

PS-89675-3730	PRODUCT SPECIFICATION
MIL-STD-348B, FIG.79	INTERFACE SMPM SOCKET
SPECIFICATION	DESCRIPTION

CHG:ADD -0232 PER PDR16062276 EC NO: URF2016-0858 DRW:RYEH 2016/06/22 CHKD: APPR:YCHENG 2016/06/29	QUALITY SYMBOLS	GENERAL TOLERANCES (UNLESS SPECIFIED)	DIMENSION STYLE	SCALE	DESIGN UNITS	THIRD ANGLE PROJECTION
	▽=0	mm INCH	MM/IN	20:1	INCH	☉
	▽=0	4 PLACES ± --- ± ---	DRAWN BY DATE	TITLE		
	▽=0	3 PLACES ± --- ± ---	JWIENER 2013/05/10	SMPM JACK/JACK BULLET		
	2 PLACES ± --- ± ---	CHECKED BY DATE	SMPM-J/J EWR-5161			
	1 PLACE ± --- ± ---	SSS 2015/03/17				
	0 PLACE ± --- ± ---	APPROVED BY DATE				
	ANGULAR ± 2°	JWIENER 2013/08/16				
	DRAFT WHERE APPLICABLE MUST REMAIN WITHIN DIMENSIONS	MATERIAL NO.	DOCUMENT NO.		SHEET NO.	
A5		SEE TABLE	SD-73300-022		1 OF 1	
		THIS DRAWING CONTAINS INFORMATION THAT IS PROPRIETARY TO MOLEX INCORPORATED AND SHOULD NOT BE USED WITHOUT WRITTEN PERMISSION				