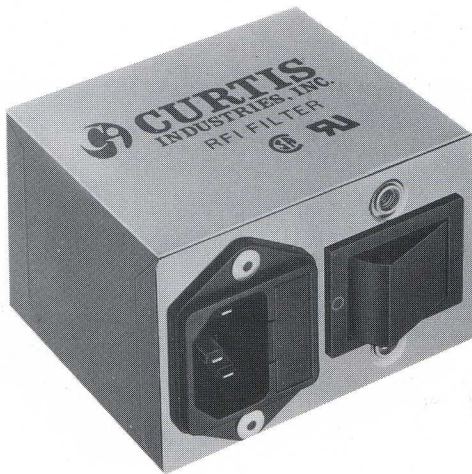


CURTIS F1800 RFI FILTERS



FEATURES

- High Performance Filter Designed for Switching Power Supply Emissions
- Fused IEC Connector
- ON/OFF Power Switch
- Low-Leakage Current Design

SPECIFICATIONS

Rated Voltage: 250VAC Max., 50/60 Hz.

Rated Current at: 115VAC 250VAC
3A 1.5A

Current Overload: 6X Rated for 8 seconds

Maximum Operating Ambient Temperature at Rated Current: 40° C

Humidity Range: 0-95% R.H.

Insulation Resistance: 9 x 10⁹ ohms at 100VDC

Maximum Leakage Current

Each Line to Ground –

at 115VAC, 60 Hz.: 0.25mA
at 250VAC, 50 Hz.: 0.40mA

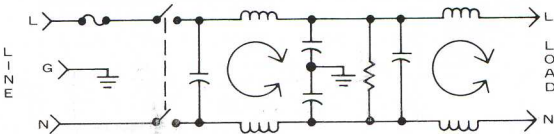
Hipot Test (one minute) –

Line to Ground: 1500VAC
Line to Line: 1768VDC

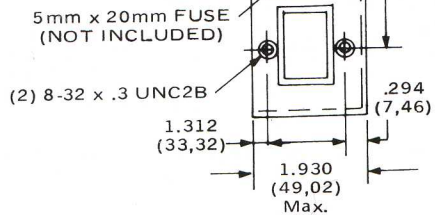
SAFETY AGENCY RECOGNITION/APPROVALS



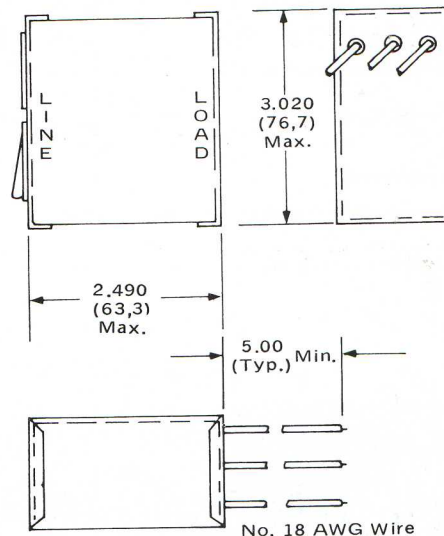
SCHEMATIC



F1800FB03



Refer to Page 49 for Standard Mounting Cutouts



Nominal Current Rating	Part Number	Termination Line/Load	MINIMUM INSERTION LOSS – dB (50 ohm Circuit)						
			MODE	.15	.50	Frequency – MHz			
						1.0	5.0	10	30
3A	F1800FB03	Fused IEC/WIre	Common	48	60	60	60	50	50
			Differential	40	50	55	50	50	50