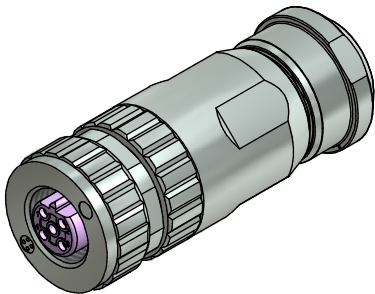
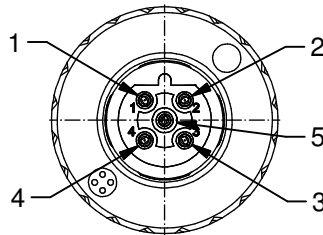
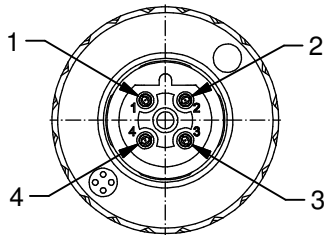


B-coding

4pos

5pos



Technical specification:

Rated voltage: IEC 61076-2-101	4pos 5pos 250V 60V
Current rating: IEC 61076-2-101	7,5 A at 40 °C, with 1,5mm ²
Insulation resistance: IEC 60512	>=100 MΩ
Pollution degree: IEC 60664-1	3/2
Degree of protection: IEC 60529	IP 67, in mated condition
Temperature range: IEC 60664-1	-30 °C ... +85 °C
Mating cycles: IEC 60512-9a	>=50
Wire cross section:	max. AWG16 / max. 1,50 mm ² (incl. wire end ferrule)

Materials:

Contact:	CuZn
Contact plating:	CUSnZn (white bronze)
Contact carrier:	PA6, UL 94 V-0
Cable seal:	Elastomere
O-Ring:	FKM / NBR
Coupling nut:	GD-Zn, Ni plated
Housing:	GD-Zn, Ni plated

Installation specification:

Recommended torque:	0,6 Nm
Conec installation tooling:	Torque wrench: 36-000200 Insert across flats 18: 36-000240
Recommended torque, screw termination contact:	0,3 Nm

(C)

Part no:	Description:	Pos:	Cable-Ø:
43-00280	SAL - 12B - RKC4 - S / 150 / A5220	4	4 - 8 mm
43-00281	SAL - 12B - RKC5 - S / 150 / A5220	5	4 - 8 mm

DO NOT ALTER CAD DRAWING BY HAND
Directive 2002/95/EC RoHS compliant

Index: c / 30.05.16 KH A6152
Description expanded

tolerance of cable:

general tolerance: 0 ± 0,50mm
0,0 ± 0,25mm
0,00 ± 0,10mm

THIS DRAWING MAY NOT BE COPIED OR REPRODUCED IN ANY WAY, AND MAY NOT BE PASSED ON TO A THIRD PARTY WITHOUT WRITTEN PERMISSION. OWNERSHIP AND COPYRIGHT OF CONEC GmbH

dim. in mm

	date	name
drawn	23.10.13	Henneboel
appd.	23.10.13	Strakerjahn

CONEC®

title: Female connector M12x1, field attachable, shielded, axial, screw termination, Profibus DP

dwg no: 43K1A2245

part no: see table