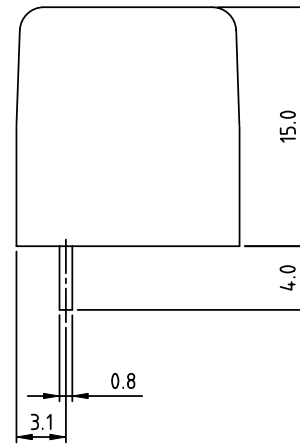
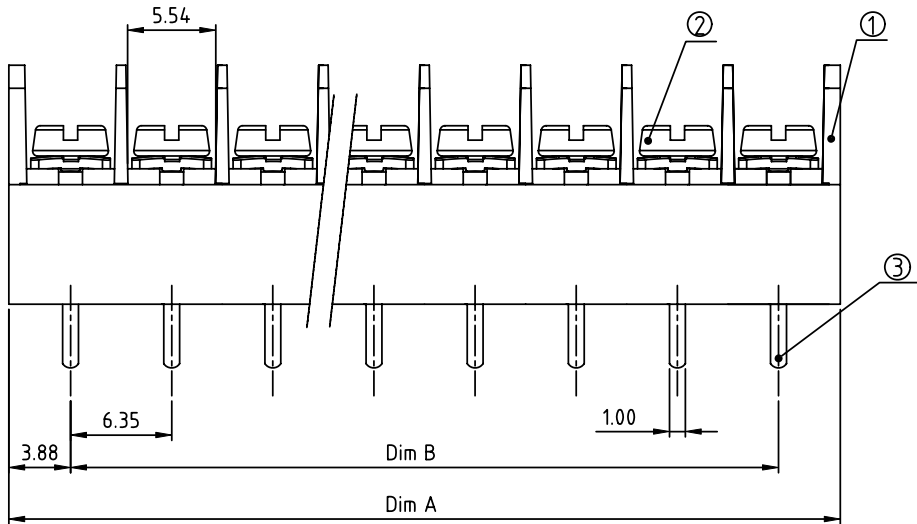
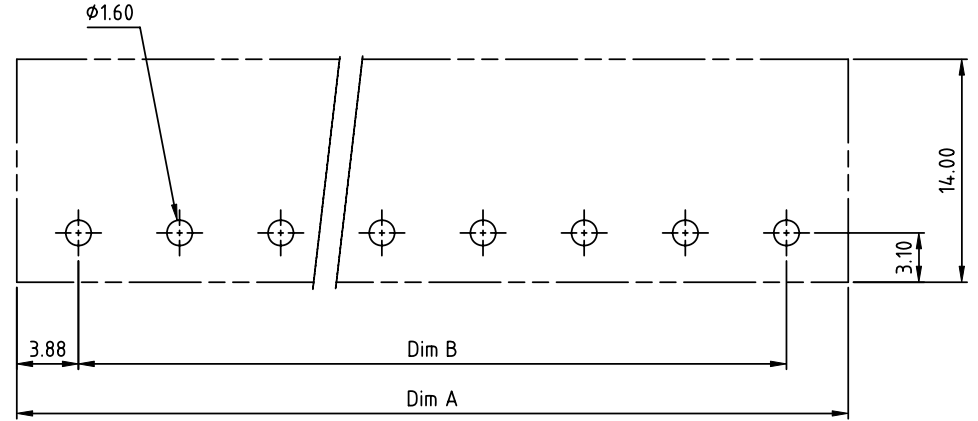
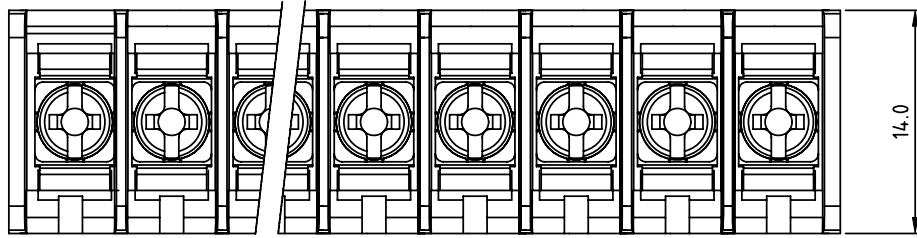


PRODUCT NUMBER	PITCH
YK211xx0x0JOG	6.35mm



RECOMMENDED P.C.B LAYOUT  
TOP VIEW

**MATERIALS & ELECTRICAL**  
**RATED VOLTAGE & CURRENT:** 300 V, 10 A  
**WITHSTAND VOLTAGE:** AC 2000 V/Min  
**INSULATION RESISTANCE:** 1000 MΩ OR MORE AT DC 500 V  
**OPERATING TEMPERATURE RANG:** -40 °C ~ +115 °C  
**SCREW TORQUE VALUE:** 6.5 Lb-In.  
**WIRE RANGE:** 22 - 16AWG  
**1) HOUSING:** THERMOPLASTICS, UL 94 V-0 BLACK  
**2) TERMINAL:** BRASS, 0.8t  
**3) TERMINAL SCREWS:** STEEL, M3  
**APPROVAL:** us

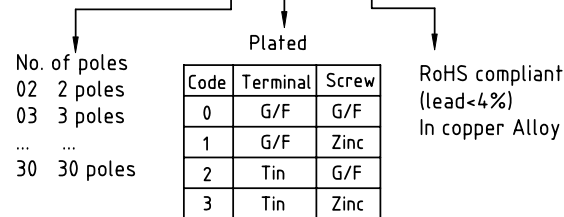
DIMENSION

Dim A	N×6.35+1.4
Dim B	(N-1)×6.35

N=Number of poles

Tolerance	Dim A	Dim B
Poles		
2p-8p	±0.35	±0.25
9p-16p	±0.45	±0.35
17p-24p	±0.55	±0.45
25p-30p	±0.65	±0.55

PART NO.: YK 211xx 0 x 0 JOG



mat'l. code		surface ASME Y14.5 ✓	tolerance ASME Y14.5	projection 	product family TERMINAL BLOCK
ltr	ecn no	dr	date	tolerances unless otherwise specified	title TERMINAL BLOCK
				angles X°±1'	BARRIER TYPE
				scale	MM
		dr	EVAN LU	061114	dwg no
		enr	EVAN LU	061114	sheet 1 of 1
		chr	HANKE FENG	061114	size A4
		appd	SHI JUN	061114	YK211xx0x0JOG
sheet index				revision	type CUSTOMER Drawing
				A	
				1	